

AP1074

Leader in Biomolecular Solutions for Life Science



Phospho-E-Cadherin-S838/S840 Rabbit pAb

Catalog No.: AP1074

Basic Information

Observed MW

125kDa

Calculated MW

97kDa

Category

Polyclonal Antibody

Applications

WB,ELISA

Cross-Reactivity

Human

Background

This gene encodes a classical cadherin of the cadherin superfamily. Alternative splicing results in multiple transcript variants, at least one of which encodes a preproprotein that is proteolytically processed to generate the mature glycoprotein. This calcium-dependent cell-cell adhesion protein is comprised of five extracellular cadherin repeats, a transmembrane region and a highly conserved cytoplasmic tail. Mutations in this gene are correlated with gastric, breast, colorectal, thyroid and ovarian cancer. Loss of function of this gene is thought to contribute to cancer progression by increasing proliferation, invasion, and/or metastasis. The ectodomain of this protein mediates bacterial adhesion to mammalian cells and the cytoplasmic domain is required for internalization. This gene is present in a gene cluster with other members of the cadherin family on chromosome 16.

Recommended Dilutions

WB 1:500 - 1:2000

Immunogen Information

Gene ID

999

Swiss Prot

P12830

Immunogen

A synthetic phosphorylated peptide around S838 & S840 of human CDH1 (NP_004351.1).

Synonyms

UVO; CDHE; ECAD; LCAM; Arc-1; BCDS1; CD324; Phospho-E-Cadherin-S838/S840

Contact



www.abclonal.com

Product Information

Source

Rabbit

Isotype

IgG

Purification

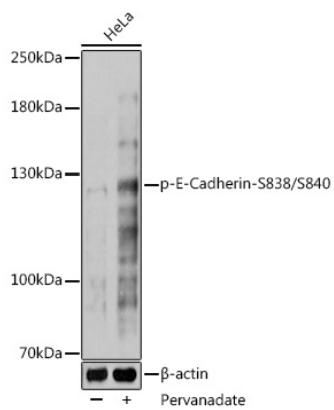
Affinity purification

Storage

Store at -20°C. Avoid freeze / thaw cycles.

Buffer: PBS with 0.01% thimerosal, 50% glycerol, pH7.3.

Validation Data



Western blot analysis of lysates from HeLa cells, using Phospho-E-Cadherin-S838/S840 Rabbit pAb (AP1074) at 1:1000 dilution. HeLa cells were treated by Pervanadate (1 nM) at 37°C for 30 minutes after serum-starvation overnight.
Secondary antibody: HRP Goat Anti-Rabbit IgG (H+L) (AS014) at 1:10000 dilution.
Lysates/proteins: 25µg per lane.
Blocking buffer: 3% BSA.
Detection: ECL Basic Kit (RM00020).
Exposure time: 90s.