

Phospho-PP2A alpha-Y307 Rabbit mAb

Catalog No.: AP1043 **Recombinant**

Basic Information

Catalog No.

AP1043

Observed MW

35KDa

Calculated MW

35kDa

Category

Primary antibody

Applications

WB

Cross-Reactivity

Human, Mouse

Recommended Dilutions

WB 1:500 - 1:2000

Background

This gene encodes the phosphatase 2A catalytic subunit. Protein phosphatase 2A is one of the four major Ser/Thr phosphatases, and it is implicated in the negative control of cell growth and division. It consists of a common heteromeric core enzyme, which is composed of a catalytic subunit and a constant regulatory subunit, that associates with a variety of regulatory subunits. This gene encodes an alpha isoform of the catalytic subunit. [provided by RefSeq, Jul 2008]

Immunogen Information

Gene ID

5515

Swiss Prot

P67775

Immunogen

A phospho specific peptide corresponding to residues surrounding Y307 of human PP2A alpha

Synonyms

PP2Ac; PP2CA; PP2Calpha; RP-C

Contact

 | www.abclonal.com

Product Information

Source

Rabbit

Isotype

IgG

Purification

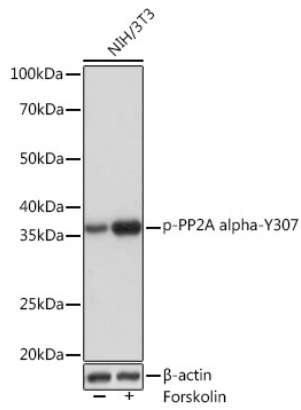
Affinity purification

Storage

Store at -20°C. Avoid freeze / thaw cycles.

Buffer: PBS with 0.02% sodium azide, 0.05% BSA, 50% glycerol, pH7.3.

Validation Data



Western blot analysis of extracts of NIH/3T3 cells, using Phospho-PP2A alpha-Y307 Rabbit mAb (AP1043) at 1:1000 dilution. NIH/3T3 cells were treated by Forskolin (30 μ M) at 37°C for 30 minutes after serum-starvation overnight.

Secondary antibody: HRP Goat Anti-Rabbit IgG (H+L) (AS014) at 1:10000 dilution.

Lysates/proteins: 25 μ g per lane.

Blocking buffer: 3% BSA.

Detection: ECL Basic Kit (RM00020).

Exposure time: 3s.