

AP1041

Leader in Biomolecular Solutions for Life Science



# Phospho-B-Raf-T401 Rabbit mAb

Catalog No.: AP1041 **Recombinant**

## Basic Information

### Observed MW

85kDa

### Calculated MW

84kDa

### Category

SMab Recombinant Monoclonal Antibody

### Applications

WB,ELISA

### Cross-Reactivity

Rat

### CloneNo number

ARC1587

## Background

This gene encodes a protein belonging to the RAF family of serine/threonine protein kinases. This protein plays a role in regulating the MAP kinase/ERK signaling pathway, which affects cell division, differentiation, and secretion. Mutations in this gene, most commonly the V600E mutation, are the most frequently identified cancer-causing mutations in melanoma, and have been identified in various other cancers as well, including non-Hodgkin lymphoma, colorectal cancer, thyroid carcinoma, non-small cell lung carcinoma, hairy cell leukemia and adenocarcinoma of lung. Mutations in this gene are also associated with cardiofaciocutaneous, Noonan, and Costello syndromes, which exhibit overlapping phenotypes. A pseudogene of this gene has been identified on the X chromosome.

## Recommended Dilutions

WB 1:500 - 1:2000

## Immunogen Information

### Gene ID

673

### Swiss Prot

P15056

### Immunogen

A synthetic phosphorylated peptide around T401 of human-B Raf (NP\_004324.2).

### Synonyms

NS7; B-raf; BRAF1; RAFB1; B-RAF1; BRAF-1; Phospho-B-Raf-T401

## Contact



[www.abclonal.com](http://www.abclonal.com)

## Product Information

### Source

Rabbit

### Isotype

IgG

### Purification

Affinity purification

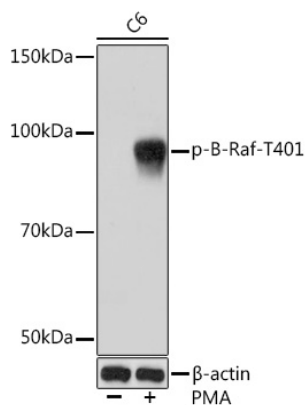
### Storage

Store at -20°C. Avoid freeze / thaw cycles.

Buffer: PBS with 0.02% sodium azide,0.05% BSA,50% glycerol,pH7.3.

## Validation Data

---



Western blot analysis of extracts of C6 cells, using Phospho-B-Raf-T401 Rabbit mAb (AP1041) at 1:1000 dilution. C6 cells were treated by PMA/TPA (200 nM) at 37°C for 30 minutes after serum-starvation overnight.

Secondary antibody: HRP Goat Anti-Rabbit IgG (H+L) (AS014) at 1:10000 dilution.

Lysates/proteins: 25µg per lane.

Blocking buffer: 3% BSA.

Detection: ECL Basic Kit (RM00020).

Exposure time: 10s.