

AP1030

Leader in Biomolecular Solutions for Life Science



# Phospho-ATM-S1981 Rabbit mAb

Catalog No.: AP1030 **Recombinant** **1 Publications**

## Basic Information

### Observed MW

350kDa

### Calculated MW

351kDa

### Category

SMab Recombinant Monoclonal Antibody

### Applications

WB,ELISA

### Cross-Reactivity

Human

### CloneNo number

ARC1575

## Background

The protein encoded by this gene belongs to the PI3/PI4-kinase family. This protein is an important cell cycle checkpoint kinase that phosphorylates; thus, it functions as a regulator of a wide variety of downstream proteins, including tumor suppressor proteins p53 and BRCA1, checkpoint kinase CHK2, checkpoint proteins RAD17 and RAD9, and DNA repair protein NBS1. This protein and the closely related kinase ATR are thought to be master controllers of cell cycle checkpoint signaling pathways that are required for cell response to DNA damage and for genome stability. Mutations in this gene are associated with ataxia telangiectasia, an autosomal recessive disorder.

## Recommended Dilutions

WB 1:500 - 1:2000

## Immunogen Information

### Gene ID

472

### Swiss Prot

Q13315

### Immunogen

A synthetic phosphorylated peptide around S1981 of human ATM (Q13315).

### Synonyms

AT1; ATA; ATC; ATD; ATE; ATDC; TEL1; TELO1; Phospho-ATM-S1981

## Contact



[www.abclonal.com](http://www.abclonal.com)

## Product Information

### Source

Rabbit

### Isotype

IgG

### Purification

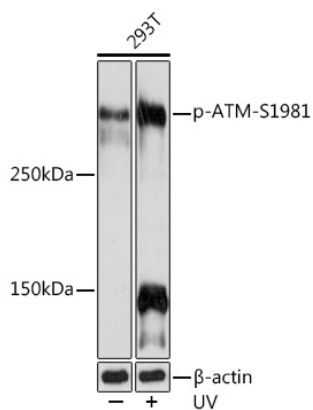
Affinity purification

### Storage

Store at -20°C. Avoid freeze / thaw cycles.

Buffer: PBS with 0.02% sodium azide,0.05% BSA,50% glycerol,pH7.3.

## Validation Data



Western blot analysis of extracts of 293T cells, using Phospho-ATM-S1981 Rabbit mAb (AP1030) at 1:1000 dilution. 293T cells were treated by UV at room temperature for 15-30 minutes.  
Secondary antibody: HRP Goat Anti-Rabbit IgG (H+L) (AS014) at 1:10000 dilution.  
Lysates/proteins: 25µg per lane.  
Blocking buffer: 3% BSA.  
Detection: ECL Enhanced Kit (RM00021).  
Exposure time: 3min.