

AP1002

Leader in Biomolecular Solutions for Life Science



Phospho-AMPK α 1-S496 Rabbit mAb

Catalog No.: AP1002 **Recombinant** **18 Publications**

Basic Information

Observed MW

64kDa

Calculated MW

64kDa

Category

SMab Recombinant Monoclonal Antibody

Applications

WB,ELISA

Cross-Reactivity

Mouse

CloneNo number

ARC1547

Background

The protein encoded by this gene belongs to the ser/thr protein kinase family. It is the catalytic subunit of the 5'-prime-AMP-activated protein kinase (AMPK). AMPK is a cellular energy sensor conserved in all eukaryotic cells. The kinase activity of AMPK is activated by the stimuli that increase the cellular AMP/ATP ratio. AMPK regulates the activities of a number of key metabolic enzymes through phosphorylation. It protects cells from stresses that cause ATP depletion by switching off ATP-consuming biosynthetic pathways. Alternatively spliced transcript variants encoding distinct isoforms have been observed.

Recommended Dilutions

WB 1:500 - 1:2000

Immunogen Information

Gene ID

5562

Swiss Prot

Q13131

Immunogen

A synthetic phosphorylated peptide around S496 of human AMPK α 1 (Q13131).

Synonyms

AMPK; AMPK α 1; AMPK alpha 1; Phospho-AMPK α 1-S496

Contact



www.abclonal.com

Product Information

Source

Rabbit

Isotype

IgG

Purification

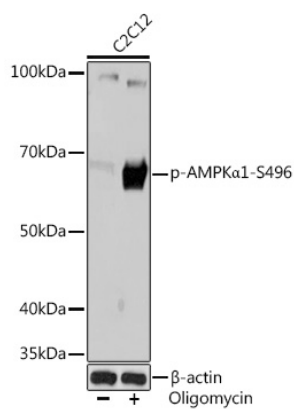
Affinity purification

Storage

Store at -20°C. Avoid freeze / thaw cycles.

Buffer: PBS with 0.02% sodium azide,0.05% BSA,50% glycerol,pH7.3.

Validation Data



Western blot analysis of extracts of C2C12 cells, using Phospho-AMPK α 1-S496 Rabbit mAb (AP1002) at 1:1000 dilution. C2C12 cells were treated by oligomycin (0.5 μ M) at 37°C for 30 minutes.
Secondary antibody: HRP Goat Anti-Rabbit IgG (H+L) (AS014) at 1:10000 dilution.
Lysates/proteins: 25 μ g per lane.
Blocking buffer: 3% BSA.
Detection: ECL Basic Kit (RM00020).
Exposure time: 3min.