

AP0892

Leader in Biomolecular Solutions for Life Science



Phospho-FOXO1-T24/FOXO3A-T32/FOXO4-T28 Rabbit pAb

Catalog No.: AP0892

Basic Information

Observed MW

65kDa/73kDa

Calculated MW

Category

Polyclonal Antibody

Applications

WB,IHC-P,ELISA

Cross-Reactivity

Human,Mouse,Rat

Background

This gene belongs to the forkhead family of transcription factors which are characterized by a distinct forkhead domain. The specific function of this gene has not yet been determined; however, it may play a role in myogenic growth and differentiation. Translocation of this gene with PAX3 has been associated with alveolar rhabdomyosarcoma. [provided by RefSeq, Jul 2008]

Recommended Dilutions

WB	1:100 - 1:500
IHC-P	1:50 - 1:200

Immunogen Information

Gene ID

2308/2309/4303

Swiss Prot

Q12778/O43524

Immunogen

A synthetic phosphorylated peptide around T24 of human FOXO1/FOXO3A/FOXO4FOXO1 (NP_002006.2).

Synonyms

FoxO1/FoxO3a/FoxO4; Phospho-FOXO1-T24/FOXO3A-T32/FOXO4-T28

Contact

 www.abclonal.com

Product Information

Source

Rabbit

Isotype

IgG

Purification

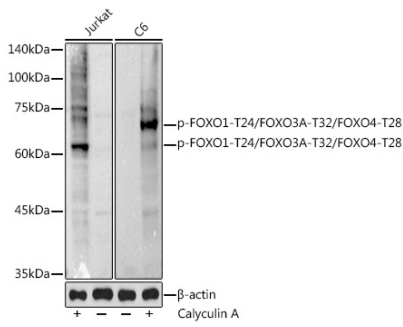
Affinity purification

Storage

Store at -20°C. Avoid freeze / thaw cycles.

Buffer: PBS with 0.01% thimerosal, 50% glycerol, pH7.3.

Validation Data



Western blot analysis of various lysates using Phospho-FOXO1-T24/FOXO3A-T32/FOXO4-T28 Rabbit pAb (AP0892) at 1:500 dilution. Jurkat cells were treated by Calyculin A (100 nM) at 37°C for 30 minutes.

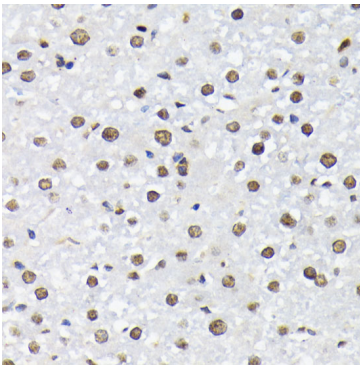
Secondary antibody: HRP Goat Anti-Rabbit IgG (H+L) (AS014) at 1:10000 dilution.

Lysates/proteins: 25µg per lane.

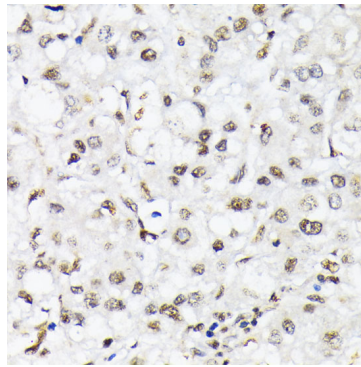
Blocking buffer: 3% nonfat dry milk in TBST.

Detection: ECL Basic Kit (RM00020).

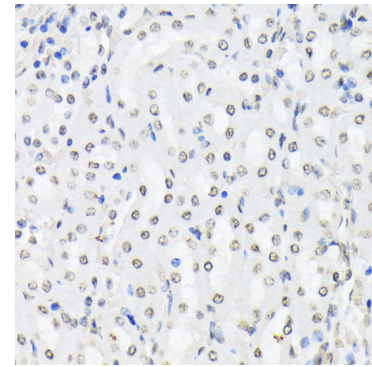
Exposure time: 30s.



Immunohistochemistry analysis of paraffin-embedded Rat liver using Phospho-FOXO1-T24/FOXO3A-T32/FOXO4-T28 Rabbit pAb (AP0892) at dilution of 1:200 (40x lens). Perform microwave antigen retrieval with 10 mM Tris/EDTA buffer pH 9.0 before commencing with IHC staining protocol.



Immunohistochemistry analysis of paraffin-embedded Human liver cancer using Phospho-FOXO1-T24/FOXO3A-T32/FOXO4-T28 Rabbit pAb (AP0892) at dilution of 1:200 (40x lens). Perform microwave antigen retrieval with 10 mM Tris/EDTA buffer pH 9.0 before commencing with IHC staining protocol.



Immunohistochemistry analysis of paraffin-embedded Mouse kidney using Phospho-FOXO1-T24/FOXO3A-T32/FOXO4-T28 Rabbit pAb (AP0892) at dilution of 1:200 (40x lens). Perform microwave antigen retrieval with 10 mM Tris/EDTA buffer pH 9.0 before commencing with IHC staining protocol.