

Phospho-AMPKa1-T183/AMPKa2-T172 Rabbit pAb

Catalog No.: AP0883 **4 Publications**

Basic Information

Observed MW

62kDa

Calculated MW

64kDa/65kDa/62kDa

Category

Primary antibody

Applications

ELISA, WB

Cross-Reactivity

Human, Rat

Background

The protein encoded by this gene belongs to the ser/thr protein kinase family. It is the catalytic subunit of the 5'-prime-AMP-activated protein kinase (AMPK). AMPK is a cellular energy sensor conserved in all eukaryotic cells. The kinase activity of AMPK is activated by the stimuli that increase the cellular AMP/ATP ratio. AMPK regulates the activities of a number of key metabolic enzymes through phosphorylation. It protects cells from stresses that cause ATP depletion by switching off ATP-consuming biosynthetic pathways. Alternatively spliced transcript variants encoding distinct isoforms have been observed.

Recommended Dilutions

WB 1:500 - 1:2000

Immunogen Information

Gene ID

5562/5563

Swiss Prot

Q13131/P54646

Immunogen

A synthetic phosphorylated peptide around T183 of human PRKAA1PRKAA1 (NP_006242.5).

Synonyms

AMPKa1/AMPKa2; Phospho-AMPKa1-T183/AMPKa2-T172

Contact

 | www.abclonal.com

Product Information

Source

Rabbit

Isotype

IgG

Purification

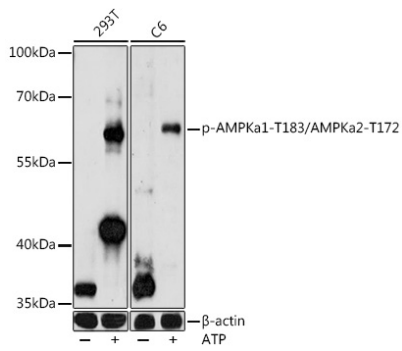
Affinity purification

Storage

Store at -20°C. Avoid freeze / thaw cycles.

Buffer: PBS with 0.01% thimerosal, 50% glycerol, pH7.3.

Validation Data



Western blot analysis of various lysates using Phospho-AMPKa1-T183/AMPKa2-T172 Rabbit pAb (AP0883) at 1:1000 dilution. 293T and C6 cells were treated by ATP (5 mM) at 30°C for 1 hour. Secondary antibody: HRP Goat Anti-Rabbit IgG (H+L) (AS014) at 1:10000 dilution. Lysates/proteins: 25µg per lane. Blocking buffer: 3% nonfat dry milk in TBST. Detection: ECL Enhanced Kit (RM00021). Exposure time: 90s.