

AP0867

Leader in Biomolecular Solutions for Life Science



Phospho-IRS1-S1101 Rabbit pAb

Catalog No.: AP0867

Basic Information

Observed MW

180kDa

Calculated MW

132kDa

Category

Polyclonal Antibody

Applications

WB,ELISA

Cross-Reactivity

Human,Mouse

Background

This gene encodes a protein which is phosphorylated by insulin receptor tyrosine kinase. Mutations in this gene are associated with type II diabetes and susceptibility to insulin resistance.

Recommended Dilutions

WB 1:500 - 1:2000

Immunogen Information

Gene ID

3667

Swiss Prot

P35568

Immunogen

A synthetic phosphorylated peptide around S1101 of human IRS1 (NP_005535.1?).

Synonyms

HIRS-1; Phospho-IRS1-S1101

Contact



www.abclonal.com

Product Information

Source

Rabbit

Isotype

IgG

Purification

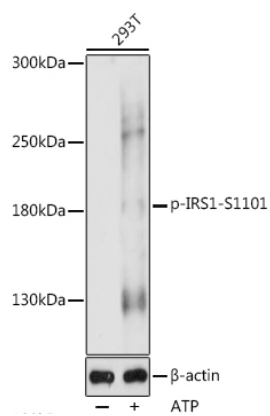
Affinity purification

Storage

Store at -20°C. Avoid freeze / thaw cycles.

Buffer: PBS with 0.01% thimerosal,50% glycerol,pH7.3.

Validation Data



Western blot analysis of lysates from 293T cells, using Phospho-IRS1-S1101 Rabbit pAb (AP0867) at 1:1000 dilution. 293T cells were treated by ATP(5 mM) at 30°C for 1 hour.
Secondary antibody: HRP Goat Anti-Rabbit IgG (H+L) (AS014) at 1:10000 dilution.
Lysates/proteins: 25µg per lane.
Blocking buffer: 3% BSA.
Detection: ECL Basic Kit (RM00020).
Exposure time: 30s.