

AP0823

Leader in Biomolecular Solutions for Life Science



# Phospho-AP2M1-T156 Rabbit pAb

Catalog No.: AP0823

1 Publications

## Basic Information

### Observed MW

50kDa

### Calculated MW

50kDa

### Category

Polyclonal Antibody

### Applications

WB, ELISA

### Cross-Reactivity

Human, Mouse

## Background

This gene encodes a subunit of the heterotetrameric coat assembly protein complex 2 (AP2), which belongs to the adaptor complexes medium subunits family. The encoded protein is required for the activity of a vacuolar ATPase, which is responsible for proton pumping occurring in the acidification of endosomes and lysosomes. The encoded protein may also play an important role in regulating the intracellular trafficking and function of CTLA-4 protein. Three transcript variants encoding different isoforms have been found for this gene.

## Recommended Dilutions

WB 1:500 - 1:2000

## Immunogen Information

### Gene ID

1173

### Swiss Prot

Q96CW1

### Immunogen

A synthetic phosphorylated peptide around T156 of human AP2M1 (NP\_001020376.1).

### Synonyms

mu2; AP50; MRD60; CLAPM1; Phospho-AP2M1-T156

## Contact



[www.abclonal.com](http://www.abclonal.com)

## Product Information

### Source

Rabbit

### Isotype

IgG

### Purification

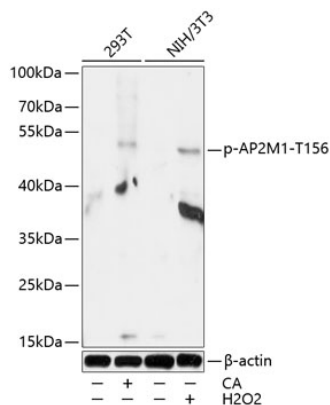
Affinity purification

### Storage

Store at -20°C. Avoid freeze / thaw cycles.

Buffer: PBS with 0.01% thimerosal, 50% glycerol, pH 7.3.

## Validation Data



Western blot analysis of lysates from 293T and NIH/3T3 cells, using Phospho-AP2M1-T156 Rabbit pAb (AP0823) at 1:1000 dilution. 293T cells were treated by Calyculin A for 30 minutes after serum-starvation overnight. NIH/3T3 cells were treated by Hydrogen Peroxide (2nM) for 15 minutes after serum-starvation overnight. Secondary antibody: HRP Goat Anti-Rabbit IgG (H+L) (AS014) at 1:10000 dilution. Lysates/proteins: 25μg per lane. Blocking buffer: 3% BSA. Detection: ECL Basic Kit (RM00020). Exposure time: 30s.