

AP0783

Leader in Biomolecular Solutions for Life Science



Phospho-Filamin A-S2152 Rabbit pAb

Catalog No.: AP0783

1 Publications

Basic Information

Observed MW

300kDa

Calculated MW

281kDa

Category

Polyclonal Antibody

Applications

WB,ELISA

Cross-Reactivity

Human,Mouse,Rat

Background

The protein encoded by this gene is an actin-binding protein that crosslinks actin filaments and links actin filaments to membrane glycoproteins. The encoded protein is involved in remodeling the cytoskeleton to effect changes in cell shape and migration. This protein interacts with integrins, transmembrane receptor complexes, and second messengers. Defects in this gene are a cause of several syndromes, including periventricular nodular heterotopias (PVNH1, PVNH4), otopalatodigital syndromes (OPD1, OPD2), frontometaphyseal dysplasia (FMD), Melnick-Needles syndrome (MNS), and X-linked congenital idiopathic intestinal pseudoobstruction (CIIPX). Two transcript variants encoding different isoforms have been found for this gene.

Recommended Dilutions

WB 1:500 - 1:2000

Immunogen Information

Gene ID

2316

Swiss Prot

P21333

Immunogen

A synthetic phosphorylated peptide around S2152 of human Filamin A (NP_001104026.1).

Synonyms

FLN; FMD; MNS; OPD; ABPX; CSBS; CVD1; FGS2; FLN1; NHBP; OPD1; OPD2; XLVD; XMVD; FLN-A; ABP-280; Phospho-Filamin A-S2152

Contact



www.abclonal.com

Product Information

Source

Rabbit

Isotype

IgG

Purification

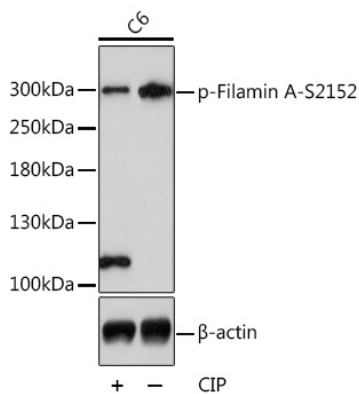
Affinity purification

Storage

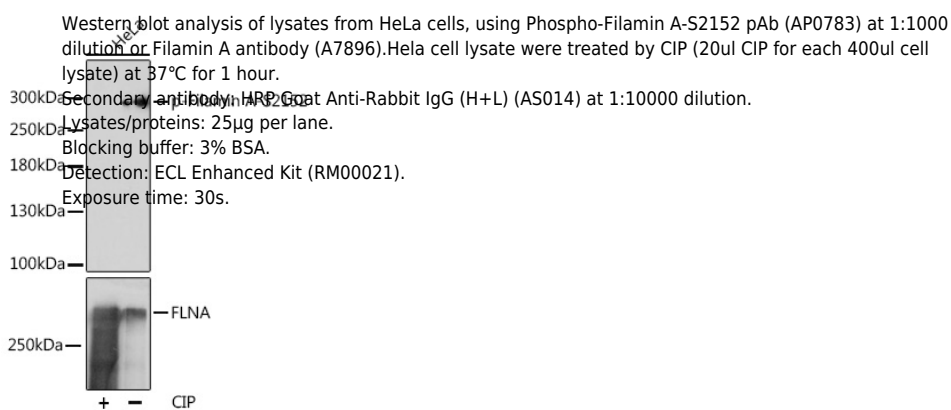
Store at -20°C. Avoid freeze / thaw cycles.

Buffer: PBS with 0.01% thimerosal,50% glycerol,pH7.3.

Validation Data



Western blot analysis of lysates from C6 cells, using Phospho-Filamin A-S2152 Rabbit pAb (AP0783) at 1:1000 dilution. C6 cell lysate were treated by CIP (20ul CIP for each 400ul cell lysate) at 37°C for 1 hour. Secondary antibody: HRP Goat Anti-Rabbit IgG (H+L) (AS014) at 1:10000 dilution. Lysates/proteins: 25µg per lane. Blocking buffer: 3% BSA. Detection: ECL Enhanced Kit (RM00021). Exposure time: 30s.



Western blot analysis of lysates from HeLa cells, using Phospho-Filamin A-S2152 pAb (AP0783) at 1:1000 dilution or Filamin A antibody (A7896). HeLa cell lysate were treated by CIP (20ul CIP for each 400ul cell lysate) at 37°C for 1 hour. Secondary antibody: HRP Goat Anti-Rabbit IgG (H+L) (AS014) at 1:10000 dilution. Lysates/proteins: 25µg per lane. Blocking buffer: 3% BSA. Detection: ECL Enhanced Kit (RM00021). Exposure time: 30s.