

AP0759

Leader in Biomolecular Solutions for Life Science



Phospho-Glucocorticoid Receptor-S211 Rabbit pAb

Catalog No.: AP0759 **1 Publications**

Basic Information

Observed MW

95kDa

Calculated MW

86kDa

Category

Polyclonal Antibody

Applications

WB,ELISA

Cross-Reactivity

Human,Mouse

Background

This gene encodes glucocorticoid receptor, which can function both as a transcription factor that binds to glucocorticoid response elements in the promoters of glucocorticoid responsive genes to activate their transcription, and as a regulator of other transcription factors. This receptor is typically found in the cytoplasm, but upon ligand binding, is transported into the nucleus. It is involved in inflammatory responses, cellular proliferation, and differentiation in target tissues. Mutations in this gene are associated with generalized glucocorticoid resistance. Alternative splicing of this gene results in transcript variants encoding either the same or different isoforms. Additional isoforms resulting from the use of alternate in-frame translation initiation sites have also been described, and shown to be functional, displaying diverse cytoplasm-to-nucleus trafficking patterns and distinct transcriptional activities (PMID:15866175).

Recommended Dilutions

WB 1:1000 - 1:2000

Immunogen Information

Gene ID

2908

Swiss Prot

P04150

Immunogen

A synthetic phosphorylated peptide around S211 of human Glucocorticoid Receptor (NP_000167.1).

Synonyms

GR; GCR; GRL; GCCR; GCRST; Phospho-Glucocorticoid Receptor-S211

Contact

 www.abclonal.com

Product Information

Source

Rabbit

Isotype

IgG

Purification

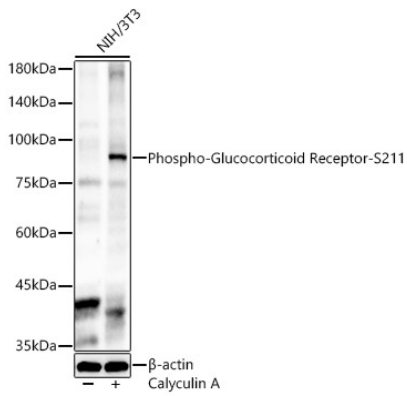
Affinity purification

Storage

Store at -20°C. Avoid freeze / thaw cycles.

Buffer: PBS with 0.01% thimerosal, 50% glycerol, pH7.3.

Validation Data



Western blot analysis of NIH/3T3, using Phospho-Glucocorticoid Receptor-S211 Rabbit pAb (AP0759) at 1:600 dilution. NIH/3T3 cells were treated by Calyculin A (100 nM) at 37°C for 30 minutes after serum-starvation overnight.

Secondary antibody: HRP Goat Anti-Rabbit IgG (H+L) (AS014) at 1:10000 dilution.

Lysates/proteins: 25µg per lane.

Blocking buffer: 3% nonfat dry milk in TBST.

Detection: ECL Enhanced Kit (RM00021).

Exposure time: 30s.