

AP0742

Leader in Biomolecular Solutions for Life Science



# Phospho-Caveolin-1-Y14 Rabbit pAb

Catalog No.: AP0742

## Basic Information

### Observed MW

23kDa

### Calculated MW

20kDa

### Category

Polyclonal Antibody

### Applications

WB,ELISA

### Cross-Reactivity

Human,Mouse

## Background

The scaffolding protein encoded by this gene is the main component of the caveolae plasma membranes found in most cell types. The protein links integrin subunits to the tyrosine kinase FYN, an initiating step in coupling integrins to the Ras-ERK pathway and promoting cell cycle progression. The gene is a tumor suppressor gene candidate and a negative regulator of the Ras-p42/44 mitogen-activated kinase cascade. Caveolin 1 and caveolin 2 are located next to each other on chromosome 7 and express colocalizing proteins that form a stable hetero-oligomeric complex. Mutations in this gene have been associated with Berardinelli-Seip congenital lipodystrophy. Alternatively spliced transcripts encode alpha and beta isoforms of caveolin 1.

## Recommended Dilutions

WB 1:1000 - 1:2000

## Immunogen Information

### Gene ID

857

### Swiss Prot

Q03135

### Immunogen

A synthetic phosphorylated peptide around Y14 of human Caveolin-1 (NP\_001744.2).

### Synonyms

CGL3; PPH3; BSCL3; LCCNS; VIP21; MSTP085; Phospho-Caveolin-1-Y14

## Contact

 [www.abclonal.com](http://www.abclonal.com)

## Product Information

### Source

Rabbit

### Isotype

IgG

### Purification

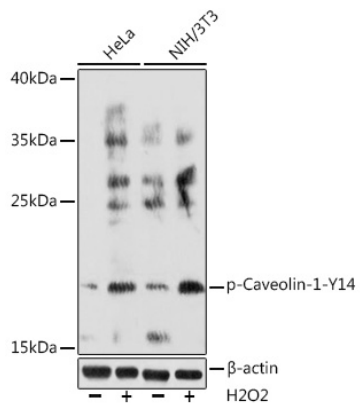
Affinity purification

### Storage

Store at -20°C. Avoid freeze / thaw cycles.

Buffer: PBS with 0.01% thimerosal, 50% glycerol, pH7.3.

## Validation Data



Western blot analysis of various lysates using Phospho-Caveolin-1-Y14 Rabbit pAb (AP0742) at 1:1000 dilution. Both HeLa cells and NIH/3T3 cells were treated by Hydrogen Peroxide (2 nM) at 37°C for 15 minutes after serum-starvation overnight. Secondary antibody: HRP Goat Anti-Rabbit IgG (H+L) (AS014) at 1:10000 dilution. Lysates/proteins: 25µg per lane. Blocking buffer: 3% BSA. Detection: ECL Basic Kit (RM00020). Exposure time: 120s.