

AP0731

Leader in Biomolecular Solutions for Life Science



Phospho-I κ B α -S32 Rabbit pAb

Catalog No.: AP0731

4 Publications

Basic Information

Observed MW

39kDa/41kDa

Calculated MW

36kDa

Category

Polyclonal Antibody

Applications

WB,IHC-P,IF/ICC,ELISA

Cross-Reactivity

Human,Mouse,Rat

Background

This gene encodes a member of the NF-kappa-B inhibitor family, which contain multiple ankrin repeat domains. The encoded protein interacts with REL dimers to inhibit NF-kappa-B/REL complexes which are involved in inflammatory responses. The encoded protein moves between the cytoplasm and the nucleus via a nuclear localization signal and CRM1-mediated nuclear export. Mutations in this gene have been found in ectodermal dysplasia anhidrotic with T-cell immunodeficiency autosomal dominant disease.

Recommended Dilutions

WB	1:500 - 1:2000
IHC-P	1:50 - 1:200
IF/ICC	1:50 - 1:200

Immunogen Information

Gene ID	Swiss Prot
4792	P25963

Immunogen

A synthetic phosphorylated peptide around S32 of human I κ B α (NP_065390.1).

Synonyms

IKBA; MAD-3; NFKBI; EDAID2; Phospho-I κ B α -S32

Contact

 www.abclonal.com

Product Information

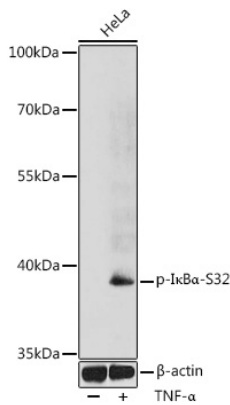
Source	Isotype	Purification
Rabbit	IgG	Affinity purification

Storage

Store at -20°C. Avoid freeze / thaw cycles.

Buffer: PBS with 0.01% thimerosal, 50% glycerol, pH7.3.

Validation Data



Western blot analysis of lysates from HeLa cells, using Phospho-IκBα-S32 Rabbit pAb (AP0731) at 1:1000 dilution. HeLa cells were treated by TNF-α (20 ng/mL) at 37°C for 30 minutes.

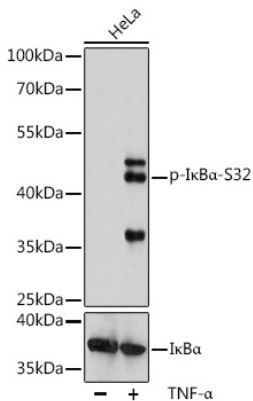
Secondary antibody: HRP Goat Anti-Rabbit IgG (H+L) (AS014) at 1:10000 dilution.

Lysates/proteins: 25μg per lane.

Blocking buffer: 3% BSA.

Detection: ECL Basic Kit (RM00020).

Exposure time: 90s.



Western blot analysis of lysates from HeLa cells, using Phospho-IκBα-S32 Rabbit pAb (A11397). HeLa cells were treated by TNF-α (20 ng/mL) at 37°C for 30 minutes.

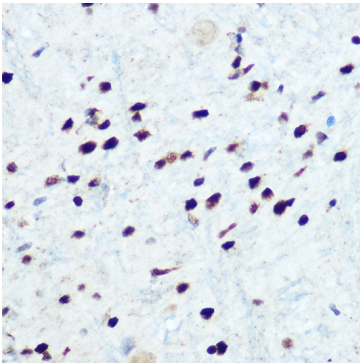
Secondary antibody: HRP Goat Anti-Rabbit IgG (H+L) (AS014) at 1:10000 dilution.

Lysates/proteins: 25μg per lane.

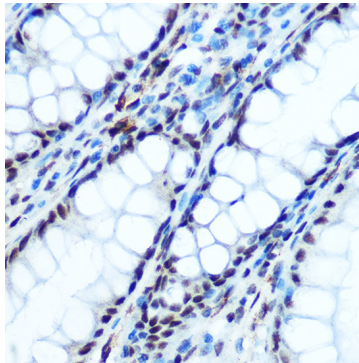
Blocking buffer: 3% BSA.

Detection: ECL Basic Kit (RM00020).

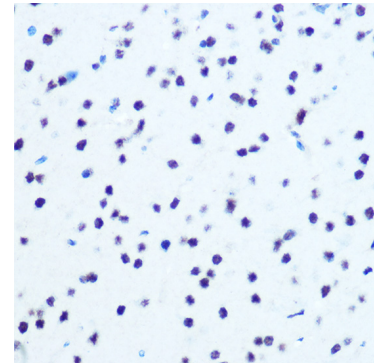
Exposure time: 3min.



Immunohistochemistry analysis of paraffin-embedded Rat brain using Phospho-IκBα-S32 Rabbit pAb (AP0731) at dilution of 1:100 (40x lens). Perform microwave antigen retrieval with 10 mM Tris/EDTA buffer pH 9.0 before commencing with IHC staining protocol.

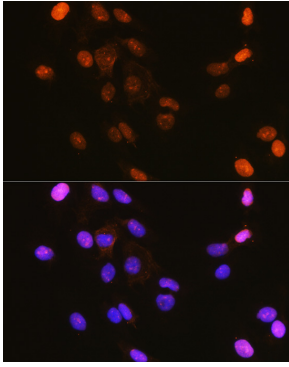


Immunohistochemistry analysis of paraffin-embedded Human colon using Phospho-IκBα-S32 Rabbit pAb (AP0731) at dilution of 1:100 (40x lens). Perform microwave antigen retrieval with 10 mM Tris/EDTA buffer pH 9.0 before commencing with IHC staining protocol.

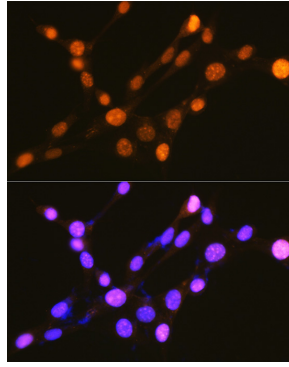


Immunohistochemistry analysis of paraffin-embedded Mouse brain using Phospho-IκBα-S32 Rabbit pAb (AP0731) at dilution of 1:100 (40x lens). Perform microwave antigen retrieval with 10 mM Tris/EDTA buffer pH 9.0 before commencing with IHC staining protocol.

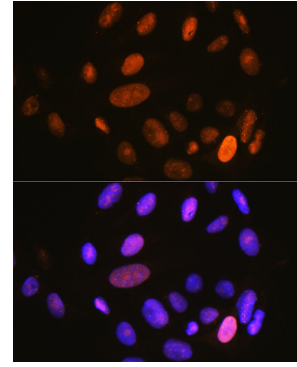
Validation Data



Immunofluorescence analysis of C6 cells using Phospho-IκBα-S32 Rabbit pAb (AP0731) at dilution of 1:100 (40x lens). Secondary antibody: Cy3 Goat Anti-Rabbit IgG (H+L) (AS007) at 1:500 dilution. Blue: DAPI for nuclear staining.



Immunofluorescence analysis of NIH-3T3 cells using Phospho-IκBα-S32 Rabbit pAb (AP0731) at dilution of 1:100 (40x lens). Secondary antibody: Cy3 Goat Anti-Rabbit IgG (H+L) (AS007) at 1:500 dilution. Blue: DAPI for nuclear staining.



Immunofluorescence analysis of U-2 OS cells using Phospho-IκBα-S32 Rabbit pAb (AP0731) at dilution of 1:100 (40x lens). Secondary antibody: Cy3 Goat Anti-Rabbit IgG (H+L) (AS007) at 1:500 dilution. Blue: DAPI for nuclear staining.