

AP0577

Leader in Biomolecular Solutions for Life Science



# Phospho-cdc25C-S216 Rabbit pAb

Catalog No.: AP0577

## Basic Information

### Observed MW

60kDa

### Calculated MW

53kDa

### Category

Polyclonal Antibody

### Applications

WB, IHC-P, ELISA

### Cross-Reactivity

Human, Mouse, Rat

## Background

This gene encodes a conserved protein that plays a key role in the regulation of cell division. The encoded protein directs dephosphorylation of cyclin B-bound CDC2 and triggers entry into mitosis. It also suppresses p53-induced growth arrest. Multiple alternatively spliced transcript variants of this gene have been described.

## Recommended Dilutions

WB	1:100 - 1:500
IHC-P	1:50 - 1:200

## Immunogen Information

### Gene ID

995

### Swiss Prot

P30307

### Immunogen

A synthetic phosphorylated peptide around S216 of human cdc25C (NP\_001781.2).

### Synonyms

CDC25; PPP1R60; Phospho-cdc25C-S216

## Contact



[www.abclonal.com](http://www.abclonal.com)

## Product Information

### Source

Rabbit

### Isotype

IgG

### Purification

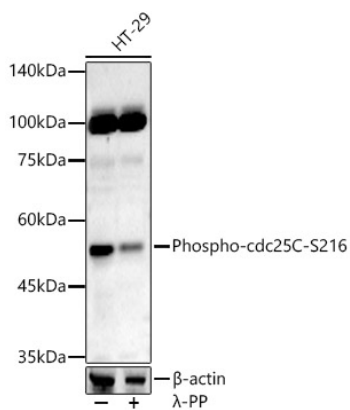
Affinity purification

### Storage

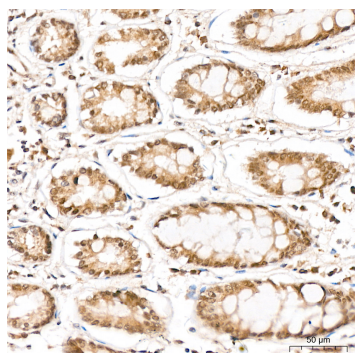
Store at -20°C. Avoid freeze / thaw cycles.

Buffer: PBS with 0.01% thimerosal, 50% glycerol, pH7.3.

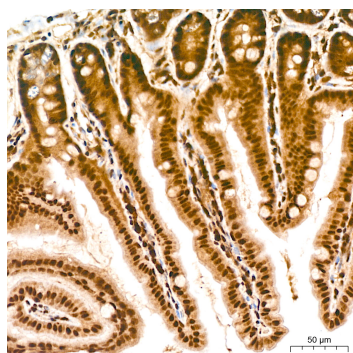
## Validation Data



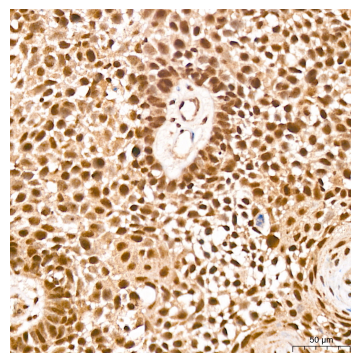
Western blot analysis of lysates from HT-29 cells, using Phospho-cdc25C-S216 Rabbit pAb (AP0577) at 1:400 dilution. HT-29 cells were treated by  $\lambda$ -PP mixed solution (1ul) at 30°C for 30 minutes. Secondary antibody: HRP Goat Anti-Rabbit IgG (H+L) (AS014) at 1:10000 dilution. Lysates/proteins: 25ug per lane. Blocking buffer: 3% nonfat dry milk in TBST. Detection: ECL Basic Kit (RM00020). Exposure time: 90s.



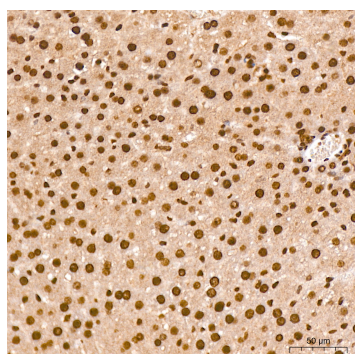
Immunohistochemistry analysis of Phospho-cdc25C-S216 in paraffin-embedded human colon tissue using Phospho-cdc25C-S216 Rabbit pAb (AP0577) at a dilution of 1:100 (40x lens). High pressure antigen retrieval was performed with 0.01 M citrate buffer (pH 6.0) prior to IHC staining.



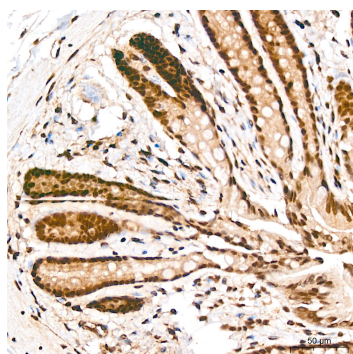
Immunohistochemistry analysis of Phospho-cdc25C-S216 in paraffin-embedded mouse intestine tissue using Phospho-cdc25C-S216 Rabbit pAb (AP0577) at a dilution of 1:100 (40x lens). High pressure antigen retrieval was performed with 0.01 M citrate buffer (pH 6.0) prior to IHC staining.



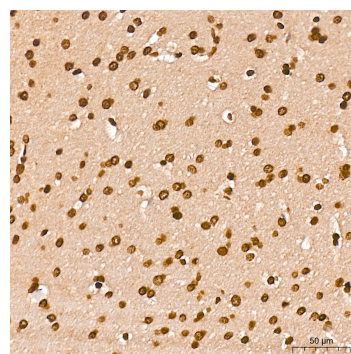
Immunohistochemistry analysis of Phospho-cdc25C-S216 in paraffin-embedded human cervix cancer tissue using Phospho-cdc25C-S216 Rabbit pAb (AP0577) at a dilution of 1:100 (40x lens). High pressure antigen retrieval was performed with 0.01 M citrate buffer (pH 6.0) prior to IHC staining.



Immunohistochemistry analysis of Phospho-cdc25C-S216 in paraffin-embedded mouse liver tissue using Phospho-cdc25C-S216 Rabbit pAb (AP0577) at a dilution of 1:100 (40x lens). High pressure antigen retrieval was performed with 0.01 M citrate buffer (pH 6.0) prior to IHC staining.



Immunohistochemistry analysis of Phospho-cdc25C-S216 in paraffin-embedded rat colon tissue using Phospho-cdc25C-S216 Rabbit pAb (AP0577) at a dilution of 1:100 (40x lens). High pressure antigen retrieval was performed with 0.01 M citrate buffer (pH 6.0) prior to IHC staining.



Immunohistochemistry analysis of Phospho-cdc25C-S216 in paraffin-embedded rat brain tissue using Phospho-cdc25C-S216 Rabbit pAb (AP0577) at a dilution of 1:100 (40x lens). High pressure antigen retrieval was performed with 0.01 M citrate buffer (pH 6.0) prior to IHC staining.