

AP0575

Leader in Biomolecular Solutions for Life Science



# Phospho-Bcl-2-S70 Rabbit pAb

Catalog No.: AP0575

## Basic Information

### Observed MW

28kDa

### Calculated MW

26kDa

### Category

Polyclonal Antibody

### Applications

WB,IF/ICC,ELISA

### Cross-Reactivity

Human,Rat

## Background

This gene encodes an integral outer mitochondrial membrane protein that blocks the apoptotic death of some cells such as lymphocytes. Constitutive expression of BCL2, such as in the case of translocation of BCL2 to Ig heavy chain locus, is thought to be the cause of follicular lymphoma. Alternative splicing results in multiple transcript variants.

## Recommended Dilutions

WB 1:500 - 1:2000

IF/ICC 1:50 - 1:200

## Immunogen Information

### Gene ID

596

### Swiss Prot

P10415

### Immunogen

A synthetic phosphorylated peptide around S70 of human Bcl-2 (NP\_000624.2).

### Synonyms

Bcl-2; PPP1R50; Phospho-Bcl-2-S70

## Contact



[www.abclonal.com](http://www.abclonal.com)

## Product Information

### Source

Rabbit

### Isotype

IgG

### Purification

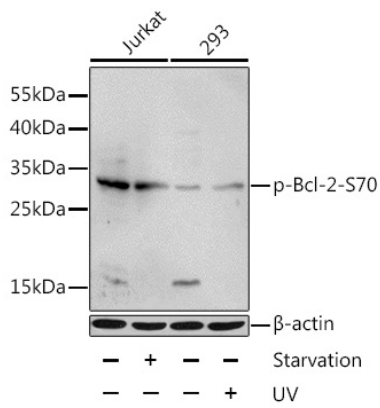
Affinity purification

### Storage

Store at -20°C. Avoid freeze / thaw cycles.

Buffer: PBS with 0.02% sodium azide,50% glycerol,pH7.3.

## Validation Data

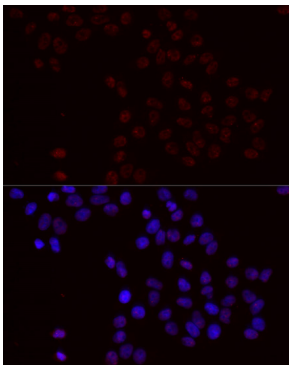


Western blot analysis of lysates from Jurkat and 293 cells, using Phospho-Bcl-2-S70 Rabbit pAb (AP0575) at 1:1000 dilution. Jurkat cells were treated by serum-starvation overnight. 293 cells were treated by UV for 15-30 minutes.

Secondary antibody: HRP Goat Anti-Rabbit IgG (H+L) (AS014) at 1:10000 dilution.

Lysates/proteins: 25 $\mu$ g per lane.

Blocking buffer: 3% BSA.



Immunofluorescence analysis of HeLa cells using Phospho-Bcl-2-S70 Rabbit pAb (AP0575) at dilution of 1:100 (40x lens). Secondary antibody: Cy3 Goat Anti-Rabbit IgG (H+L) (AS007) at 1:500 dilution. Blue: DAPI for nuclear staining.