

AP0553

Leader in Biomolecular Solutions for Life Science



Phospho-IRS1-S612 Rabbit pAb

Catalog No.: AP0553 **1 Publications**

Basic Information

Observed MW

180kDa

Calculated MW

132kDa

Category

Polyclonal Antibody

Applications

WB,IHC-P,ELISA

Cross-Reactivity

Human,Mouse,Rat

Background

This gene encodes a protein which is phosphorylated by insulin receptor tyrosine kinase. Mutations in this gene are associated with type II diabetes and susceptibility to insulin resistance.

Recommended Dilutions

WB	1:500 - 1:1000
IHC-P	1:50 - 1:200

Immunogen Information

Gene ID	Swiss Prot
3667	P35568

Immunogen

A synthetic phosphorylated peptide around S612 of human IRS1 (NP_005535.1).

Synonyms

HIRS-1; Phospho-IRS1-S612

Contact

 www.abclonal.com

Product Information

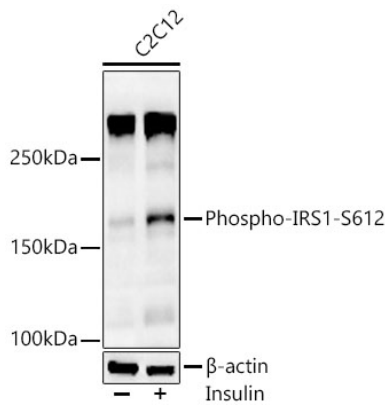
Source	Isotype	Purification
Rabbit	IgG	Affinity purification

Storage

Store at -20°C. Avoid freeze / thaw cycles.

Buffer: PBS with 0.02% sodium azide,50% glycerol,pH7.3.

Validation Data



Western blot analysis of lysates from C2C12 cells using Phospho-IRS1-S612 Rabbit pAb (AP0553) at 1:1000 dilution. C2C12 cells were treated by Insulin (100 nM) at 37°C for 30 minutes after serum-starvation overnight.

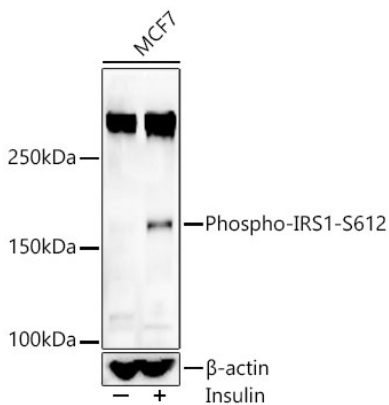
Secondary antibody: HRP Goat Anti-Rabbit IgG (H+L) (AS014) at 1:10000 dilution.

Lysates/proteins: 25 µg per lane.

Blocking buffer: 3% nonfat dry milk in TBST.

Detection: ECL Basic Kit (RM00020).

Exposure time: 90s.



Western blot analysis of lysates from MCF7 cells using Phospho-IRS1-S612 Rabbit pAb (AP0553) at 1:1000 dilution. MCF7 cells were treated by Insulin (100 nM) at 37°C for 30 minutes after serum starvation overnight.

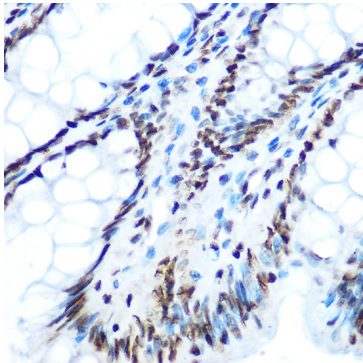
Secondary antibody: HRP Goat Anti-Rabbit IgG (H+L) (AS014) at 1:10000 dilution.

Lysates/proteins: 25 µg per lane.

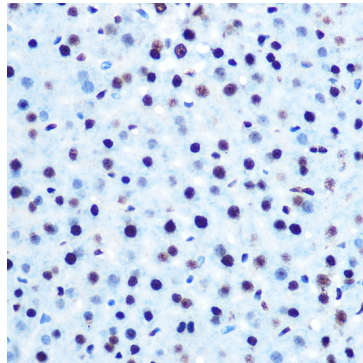
Blocking buffer: 3% nonfat dry milk in TBST.

Detection: ECL Basic Kit (RM00020).

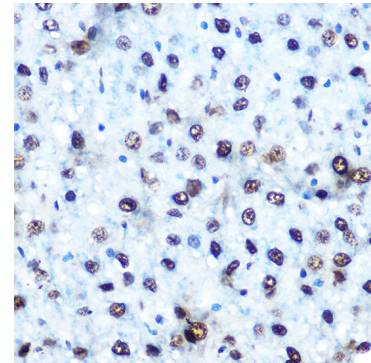
Exposure time: 90s.



Immunohistochemistry analysis of paraffin-embedded Human colon using Phospho-IRS1-S612 Rabbit pAb (AP0553) at dilution of 1:100 (40x lens). Perform microwave antigen retrieval with 10 mM Tris/EDTA buffer pH 9.0 before commencing with IHC staining protocol.



Immunohistochemistry analysis of paraffin-embedded Mouse liver using Phospho-IRS1-S612 Rabbit pAb (AP0553) at dilution of 1:100 (40x lens). Perform microwave antigen retrieval with 10 mM Tris/EDTA buffer pH 9.0 before commencing with IHC staining protocol.



Immunohistochemistry analysis of paraffin-embedded Rat liver using Phospho-IRS1-S612 Rabbit pAb (AP0553) at dilution of 1:100 (40x lens). Perform microwave antigen retrieval with 10 mM Tris/EDTA buffer pH 9.0 before commencing with IHC staining protocol.