

AP0525

Leader in Biomolecular Solutions for Life Science



Phospho-ATF2-T69/T71 Rabbit pAb

Catalog No.: AP0525 **2 Publications**

Basic Information

Observed MW

68kDa

Calculated MW

55kDa

Category

Polyclonal Antibody

Applications

WB,IHC-P,ELISA

Cross-Reactivity

Human,Mouse,Rat

Background

This gene encodes a transcription factor that is a member of the leucine zipper family of DNA binding proteins. The encoded protein has been identified as a moonlighting protein based on its ability to perform mechanistically distinct functions. This protein binds to the cAMP-responsive element (CRE), an octameric palindrome. It forms a homodimer or a heterodimer with c-Jun and stimulates CRE-dependent transcription. This protein is also a histone acetyltransferase (HAT) that specifically acetylates histones H2B and H4 in vitro; thus it may represent a class of sequence-specific factors that activate transcription by direct effects on chromatin components. The encoded protein may also be involved in cell's DNA damage response independent of its role in transcriptional regulation. Several alternatively spliced transcript variants have been found for this gene.

Recommended Dilutions

| | |
|-------|----------------|
| WB | 1:500 - 1:2000 |
| IHC-P | 1:50 - 1:200 |

Immunogen Information

| | |
|----------------|-------------------|
| Gene ID | Swiss Prot |
| 1386 | P15336 |

Immunogen

A synthetic phosphorylated peptide around T69 & T71 of human ATF2 (NP_001871.2).

Synonyms

HB16; CREB2; TREB7; CREB-2; CRE-BP1; Phospho-ATF2-T69/T71

Contact

 www.abclonal.com

Product Information

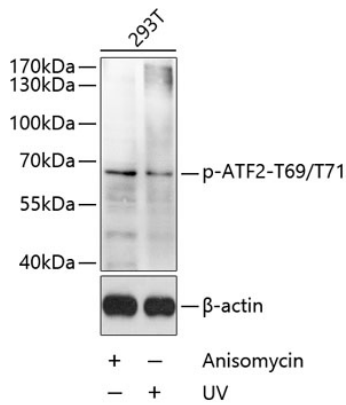
| | | |
|---------------|----------------|-----------------------|
| Source | Isotype | Purification |
| Rabbit | IgG | Affinity purification |

Storage

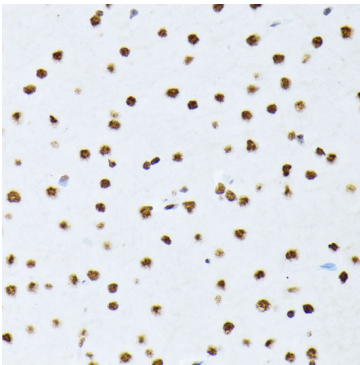
Store at -20°C. Avoid freeze / thaw cycles.

Buffer: PBS with 0.01% thimerosal, 50% glycerol, pH7.3.

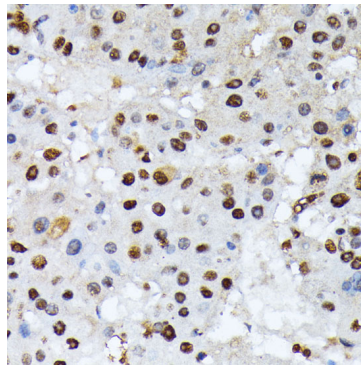
Validation Data



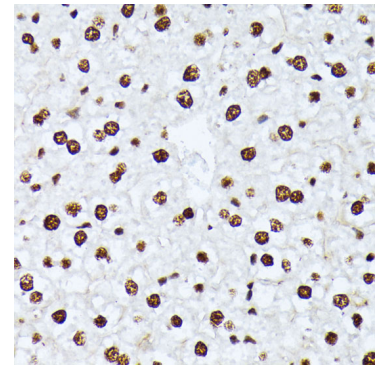
Western blot analysis of lysates from 293T cells, using Phospho-ATF2-T69/T71 Rabbit pAb (AP0525) at 1:1000 dilution.
Secondary antibody: HRP Goat Anti-Rabbit IgG (H+L) (AS014) at 1:10000 dilution.
Lysates/proteins: 25µg per lane.
Blocking buffer: 3% BSA.
Detection: ECL Basic Kit (RM00020).



Immunohistochemistry analysis of paraffin-embedded Rat brain using Phospho-ATF2-T69/T71 Rabbit pAb (AP0525) at dilution of 1:100 (40x lens). Perform microwave antigen retrieval with 10 mM Tris/EDTA buffer pH 9.0 before commencing with IHC staining protocol.



Immunohistochemistry analysis of paraffin-embedded Human liver cancer using Phospho-ATF2-T69/T71 Rabbit pAb (AP0525) at dilution of 1:100 (40x lens). Perform microwave antigen retrieval with 10 mM Tris/EDTA buffer pH 9.0 before commencing with IHC staining protocol.



Immunohistochemistry analysis of paraffin-embedded Mouse liver using Phospho-ATF2-T69/T71 Rabbit pAb (AP0525) at dilution of 1:100 (40x lens). Perform microwave antigen retrieval with 10 mM Tris/EDTA buffer pH 9.0 before commencing with IHC staining protocol.