

AP0515

Leader in Biomolecular Solutions for Life Science



# Phospho-eNOS-S1177 Rabbit pAb

Catalog No.: AP0515 **9 Publications**

## Basic Information

### Observed MW

133kDa

### Calculated MW

133kDa

### Category

Polyclonal Antibody

### Applications

WB,IHC-P,ELISA

### Cross-Reactivity

Human,Mouse

## Background

Nitric oxide is a reactive free radical which acts as a biologic mediator in several processes, including neurotransmission and antimicrobial and antitumoral activities. Nitric oxide is synthesized from L-arginine by nitric oxide synthases. Variations in this gene are associated with susceptibility to coronary spasm. Alternative splicing and the use of alternative promoters results in multiple transcript variants.

## Recommended Dilutions

WB	1:500 - 1:2000
IHC-P	1:50 - 1:200

## Immunogen Information

<b>Gene ID</b>	<b>Swiss Prot</b>
4846	P29474

### Immunogen

A synthetic phosphorylated peptide around S1177 of human eNOS (NP\_000594.2).

### Synonyms

eNOS; ECNOS; Phospho-eNOS-S1177

## Contact

 [www.abclonal.com](http://www.abclonal.com)

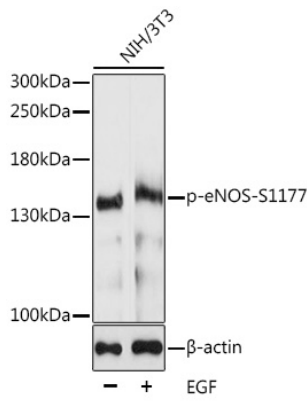
## Product Information

<b>Source</b>	<b>Isotype</b>	<b>Purification</b>
Rabbit	IgG	Affinity purification

### Storage

Store at -20°C. Avoid freeze / thaw cycles.  
Buffer: PBS with 0.01% thimerosal, 50% glycerol, pH7.3.

## Validation Data



Western blot analysis of lysates from NIH/3T3 cells, using Phospho-eNOS-S1177 Rabbit pAb (AP0515) at 1:1000 dilution. NIH/3T3 cells were treated by EGF (100ng/mL) for 30 minutes after serum-starvation overnight.

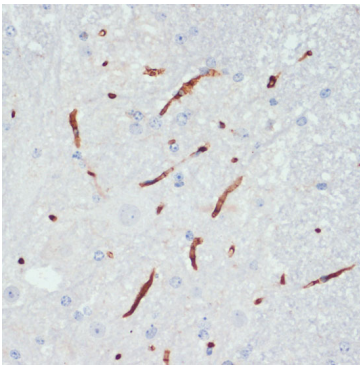
Secondary antibody: HRP Goat Anti-Rabbit IgG (H+L) (AS014) at 1:10000 dilution.

Lysates/proteins: 25µg per lane.

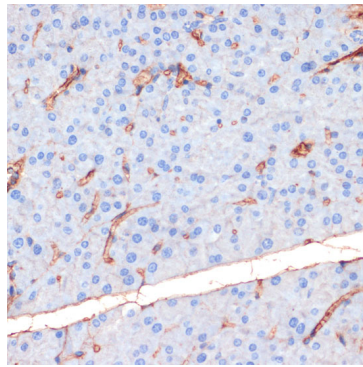
Blocking buffer: 3% BSA.

Detection: ECL Enhanced Kit (RM00021).

Exposure time: 60s.



Immunohistochemistry analysis of paraffin-embedded Mouse spinal cord using Phospho-eNOS-S1177 Rabbit pAb (AP0515) at dilution of 1:200 (40x lens). Perform microwave antigen retrieval with 10 mM Tris/EDTA buffer pH 9.0 before commencing with IHC staining protocol.



Immunohistochemistry analysis of paraffin-embedded Mouse pancreas using Phospho-eNOS-S1177 Rabbit pAb (AP0515) at dilution of 1:200 (40x lens). Perform microwave antigen retrieval with 10 mM Tris/EDTA buffer pH 9.0 before commencing with IHC staining protocol.