

AP0398

Leader in Biomolecular Solutions for Life Science



# Phospho-Tau-S422 Rabbit pAb

Catalog No.: AP0398

## Basic Information

### Observed MW

50kDa

### Calculated MW

79kDa

### Category

Polyclonal Antibody

### Applications

WB

### Cross-Reactivity

Human, Mouse, Rat

## Background

This gene encodes the microtubule-associated protein tau (MAPT) whose transcript undergoes complex, regulated alternative splicing, giving rise to several mRNA species. MAPT transcripts are differentially expressed in the nervous system, depending on stage of neuronal maturation and neuron type. MAPT gene mutations have been associated with several neurodegenerative disorders such as Alzheimer's disease, Pick's disease, frontotemporal dementia, cortico-basal degeneration and progressive supranuclear palsy.

## Recommended Dilutions

WB 1:500 - 1:2000

## Immunogen Information

### Gene ID

4137

### Swiss Prot

P10636

### Immunogen

A phospho specific peptide corresponding to residues surrounding S422 of human Tau

### Synonyms

TAU; MSTD; PPND; DDPAC; MAPTL; MTBT1; MTBT2; tau-40; FTDP-17; PPP1R103; Tau-PHF6; Phospho-Tau-S422

## Contact



[www.abclonal.com](http://www.abclonal.com)

## Product Information

### Source

Rabbit

### Isotype

IgG

### Purification

Affinity purification

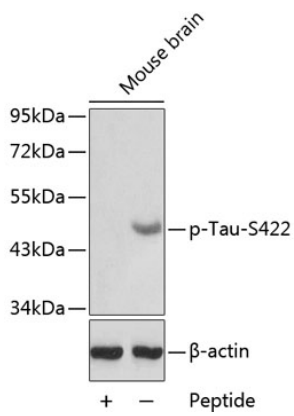
### Storage

Store at -20°C. Avoid freeze / thaw cycles.

Buffer: PBS with 0.02% sodium azide, 50% glycerol, pH7.3.

## Validation Data

---



Western blot analysis of extracts from mouse brain tissue using Phospho-Tau-S422 antibody (AP0398).  
Secondary antibody: HRP Goat Anti-Rabbit IgG (H+L) (AS014) at 1:10000 dilution.  
Lysates/proteins: 25 $\mu$ g per lane.  
Blocking buffer: 3% BSA.