

Phospho-Map2k5-S311/T315 Rabbit pAb

Catalog No.: AP0392

Basic Information

Observed MW

46kDa

Calculated MW

40kDa/49kDa/50kDa

Category

Primary antibody

Applications

WB

Cross-Reactivity

Human, Mouse, Rat

Background

Enables ATP binding activity and protein kinase activity. Involved in several processes, including ERK5 cascade; negative regulation of apoptotic process; and regulation of gene expression. Located in cytosol and nucleus. Orthologous to human MAP2K5 (mitogen-activated protein kinase kinase 5).

Recommended Dilutions

WB 1:500 - 1:2000

Immunogen Information

Gene ID

29568

Swiss Prot

Immunogen

A phospho specific peptide corresponding to residues surrounding S311/T315 of rat Map2k5

Synonyms

Mek5; Phospho-Map2k5-S311/T315

Contact

 | www.abclonal.com

Product Information

Source

Rabbit

Isotype

IgG

Purification

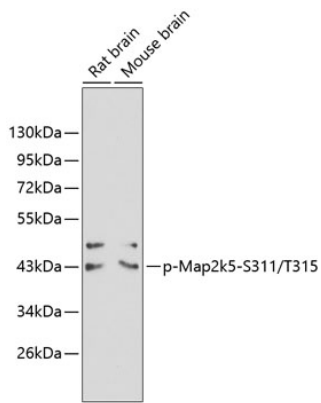
Affinity purification

Storage

Store at -20°C. Avoid freeze / thaw cycles.

Buffer: PBS with 0.02% sodium azide, 50% glycerol, pH7.3.

Validation Data



Western blot analysis of extracts from rat and mouse brain tissue using phospho-Map2k5-S311/T315 antibody (AP0392).

Secondary antibody: HRP Goat Anti-Rabbit IgG (H+L) (AS014) at 1:10000 dilution.

Lysates/proteins: 25µg per lane.

Blocking buffer: 3% BSA.