

Phospho-MEK3-S189 Rabbit pAb

Catalog No.: AP0389

Basic Information

Observed MW

39kDa

Calculated MW

39kDa

Category

Primary antibody

Applications

WB,IF/ICC

Cross-Reactivity

Human, Rat

Background

The protein encoded by this gene is a dual specificity protein kinase that belongs to the MAP kinase kinase family. This kinase is activated by mitogenic and environmental stress, and participates in the MAP kinase-mediated signaling cascade. It phosphorylates and thus activates MAPK14/p38-MAPK. This kinase can be activated by insulin, and is necessary for the expression of glucose transporter. Expression of RAS oncogene is found to result in the accumulation of the active form of this kinase, which thus leads to the constitutive activation of MAPK14, and confers oncogenic transformation of primary cells. The inhibition of this kinase is involved in the pathogenesis of Yersinia pseudotuberculosis. Multiple alternatively spliced transcript variants that encode distinct isoforms have been reported for this gene.

Recommended Dilutions

WB	1:500 - 1:2000
IF/ICC	1:100 - 1:200

Immunogen Information

Gene ID	Swiss Prot
5606	P46734

Immunogen

A phospho specific peptide corresponding to residues surrounding S189 of human MEK3

Synonyms

MEK3; MKK3; MAPKK3; PRKMK3; SAPKK2; SAPKK-2; Phospho-MEK3-S189

Contact

 | www.abclonal.com

Product Information

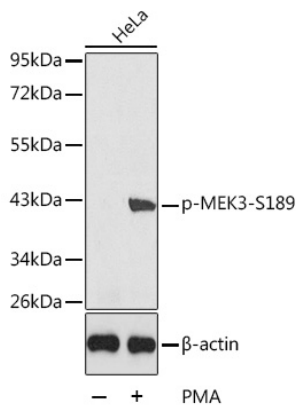
Source	Isotype	Purification
Rabbit	IgG	Affinity purification

Storage

Store at -20°C. Avoid freeze / thaw cycles.

Buffer: PBS with 0.02% sodium azide,50% glycerol,pH7.3.

Validation Data



Western blot analysis of extracts from HeLa cells, using Phospho-MEK3-S189 antibody (AP0389).
Secondary antibody: HRP Goat Anti-Rabbit IgG (H+L) (AS014) at 1:10000 dilution.
Lysates/proteins: 25µg per lane.
Blocking buffer: 3% BSA.