

AP0339

Leader in Biomolecular Solutions for Life Science



# Phospho-Ephrin B2-Y330 Rabbit pAb

Catalog No.: AP0339

## Basic Information

### Observed MW

55kDa

### Calculated MW

37kDa

### Category

Polyclonal Antibody

### Applications

WB

### Cross-Reactivity

Human, Mouse

## Background

This gene encodes a member of the ephrin (EPH) family. The ephrins and EPH-related receptors comprise the largest subfamily of receptor protein-tyrosine kinases and have been implicated in mediating developmental events, especially in the nervous system and in erythropoiesis. Based on their structures and sequence relationships, ephrins are divided into the ephrin-A (EFNA) class, which are anchored to the membrane by a glycosylphosphatidylinositol linkage, and the ephrin-B (EFNB) class, which are transmembrane proteins. This gene encodes an EFNB class ephrin which binds to the EPHB4 and EPHA3 receptors.

## Recommended Dilutions

WB 1:500 - 1:2000

## Immunogen Information

### Gene ID

1948

### Swiss Prot

P52799

### Immunogen

A phospho specific peptide corresponding to residues surrounding Y330 of human Ephrin B2

### Synonyms

HTKL; EPLG5; Htk-L; LERK5; ephrin-B2; Phospho-Ephrin B2-Y330

## Contact



[www.abclonal.com](http://www.abclonal.com)

## Product Information

### Source

Rabbit

### Isotype

IgG

### Purification

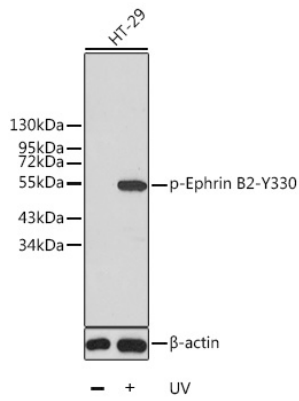
Affinity purification

### Storage

Store at -20°C. Avoid freeze / thaw cycles.

Buffer: PBS with 0.02% sodium azide, 50% glycerol, pH7.3.

## Validation Data



Western blot analysis of extracts from HT29 cells, using Phospho-Ephrin B2-Y330 antibody (AP0339).  
Secondary antibody: HRP Goat Anti-Rabbit IgG (H+L) (AS014) at 1:10000 dilution.  
Lysates/proteins: 25µg per lane.  
Blocking buffer: 3% BSA.