

Phospho-Ephrin B2-Y316 Rabbit pAb

Catalog No.: AP0338

Basic Information

Observed MW

55kDa

Calculated MW

37kDa

Category

Primary antibody

Applications

WB

Cross-Reactivity

Human, Mouse

Background

This gene encodes a member of the ephrin (EPH) family. The ephrins and EPH-related receptors comprise the largest subfamily of receptor protein-tyrosine kinases and have been implicated in mediating developmental events, especially in the nervous system and in erythropoiesis. Based on their structures and sequence relationships, ephrins are divided into the ephrin-A (EFNA) class, which are anchored to the membrane by a glycosylphosphatidylinositol linkage, and the ephrin-B (EFNB) class, which are transmembrane proteins. This gene encodes an EFNB class ephrin which binds to the EPHB4 and EPHA3 receptors.

Recommended Dilutions

WB 1:500 - 1:2000

Immunogen Information

Gene ID

1948

Swiss Prot

P52799

Immunogen

A phospho specific peptide corresponding to residues surrounding Y316 of human Ephrin B2

Synonyms

HTKL; EPLG5; Htk-L; LERK5; ephrin-B2; Phospho-Ephrin B2-Y316

Contact

 | www.abclonal.com

Product Information

Source

Rabbit

Isotype

IgG

Purification

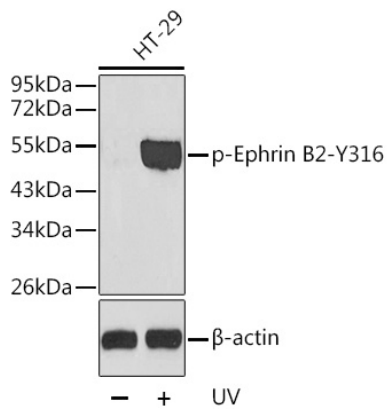
Affinity purification

Storage

Store at -20°C. Avoid freeze / thaw cycles.

Buffer: PBS with 0.02% sodium azide, 50% glycerol, pH7.3.

Validation Data



Western blot analysis of extracts from HT29 cells, using Phospho-Ephrin B2-Y316 antibody (AP0338).
Secondary antibody: HRP Goat Anti-Rabbit IgG (H+L) (AS014) at 1:10000 dilution.
Lysates/proteins: 25µg per lane.
Blocking buffer: 3% BSA.