

AP0330

Leader in Biomolecular Solutions for Life Science



Phospho-CFL1-Y139 Rabbit pAb

Catalog No.: AP0330

Basic Information

Observed MW

Refer to figures

Calculated MW

19kDa

Category

Mouse Monoclonal Antibody

Applications

IHC-P,ELISA

Cross-Reactivity

Human,Mouse,Rat

Background

The protein encoded by this gene can polymerize and depolymerize F-actin and G-actin in a pH-dependent manner. Increased phosphorylation of this protein by LIM kinase aids in Rho-induced reorganization of the actin cytoskeleton. Cofilin is a widely distributed intracellular actin-modulating protein that binds and depolymerizes filamentous F-actin and inhibits the polymerization of monomeric G-actin in a pH-dependent manner. It is involved in the translocation of actin-cofilin complex from cytoplasm to nucleus.

Recommended Dilutions

IHC-P 1:50 - 1:200

Immunogen Information

Gene ID

1072

Swiss Prot

P23528

Immunogen

A synthetic phosphorylated peptide around Y139 of human Phospho-CFL1-Y139 (NP_005498.1).

Synonyms

CFL; cofilin; HEL-S-15; Phospho-CFL1-Y139

Contact



www.abclonal.com

Product Information

Source

Rabbit

Isotype

IgG

Purification

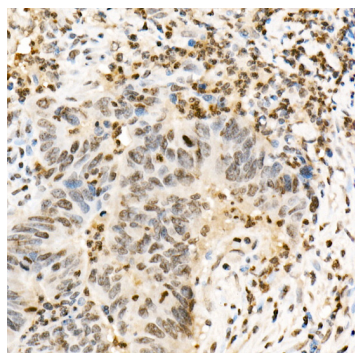
Affinity purification

Storage

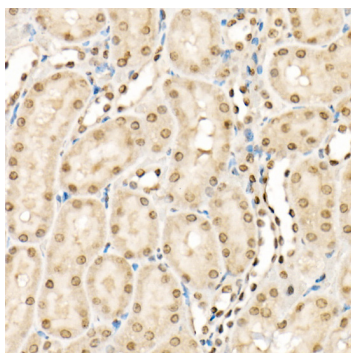
Store at -20°C. Avoid freeze / thaw cycles.

Buffer: PBS with 0.05% proclin300,50% glycerol,pH7.3.

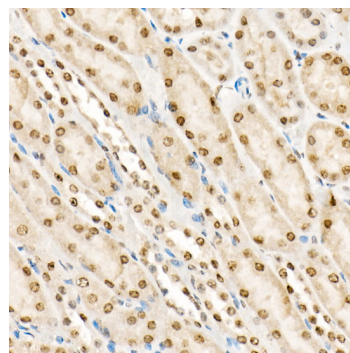
Validation Data



Immunohistochemistry analysis of paraffin-embedded human colon carcinoma using Phospho-CFL1-Y139 Rabbit pAb (AP0330) at dilution of 1:50 (40x lens). Perform high pressure antigen retrieval with 10 mM citrate buffer pH 6.0 before commencing with IHC staining protocol.



Immunohistochemistry analysis of paraffin-embedded mouse kidney using Phospho-CFL1-Y139 Rabbit pAb (AP0330) at dilution of 1:50 (40x lens). Perform high pressure antigen retrieval with 10 mM citrate buffer pH 6.0 before commencing with IHC staining protocol.



Immunohistochemistry analysis of paraffin-embedded rat kidney using Phospho-CFL1-Y139 Rabbit pAb (AP0330) at dilution of 1:50 (40x lens). Perform high pressure antigen retrieval with 10 mM citrate buffer pH 6.0 before commencing with IHC staining protocol.