

AP0329

Leader in Biomolecular Solutions for Life Science



## Phospho-CFL1-Y88/CFL2-Y88 Rabbit pAb

Catalog No.: AP0329

### Basic Information

**Observed MW**

19kDa

**Calculated MW**

18kDa/16kDa

**Category**

Polyclonal Antibody

**Applications**

WB

**Cross-Reactivity**

Human, Mouse

### Background

The protein encoded by this gene can polymerize and depolymerize F-actin and G-actin in a pH-dependent manner. Increased phosphorylation of this protein by LIM kinase aids in Rho-induced reorganization of the actin cytoskeleton. Cofilin is a widely distributed intracellular actin-modulating protein that binds and depolymerizes filamentous F-actin and inhibits the polymerization of monomeric G-actin in a pH-dependent manner. It is involved in the translocation of actin-cofilin complex from cytoplasm to nucleus.[supplied by OMIM, Apr 2004]

### Recommended Dilutions

WB 1:500 - 1:1000

### Immunogen Information

**Gene ID**

1072/1073

**Swiss Prot**

P23528/Q9Y281

**Immunogen**

A phospho specific peptide corresponding to residues surrounding Y88 of human CFL1/CFL2

**Synonyms**

CFL1/CFL2; Phospho-CFL1-Y88/CFL2-Y88

### Contact



[www.abclonal.com](http://www.abclonal.com)

### Product Information

**Source**

Rabbit

**Isotype**

IgG

**Purification**

Affinity purification

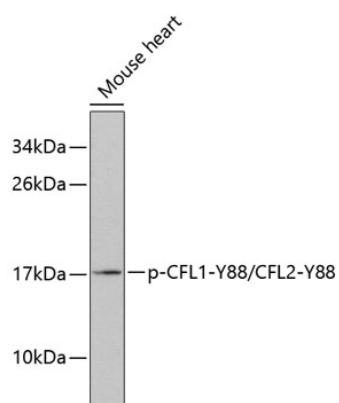
**Storage**

Store at -20°C. Avoid freeze / thaw cycles.

Buffer: PBS with 0.02% sodium azide, 50% glycerol, pH 7.3.

## Validation Data

---



Western blot analysis of extracts from mouse heart tissue, using Phospho-CFL1-Y88/CFL2-Y88 antibody (AP0329).

Secondary antibody: HRP Goat Anti-Rabbit IgG (H+L) (AS014) at 1:10000 dilution.

Lysates/proteins: 25µg per lane.

Blocking buffer: 3% BSA.