

Phospho-Cdc25b-S149 Rabbit pAb

Catalog No.: AP0322

Basic Information

Observed MW

62kDa

Calculated MW

60kDa/63kDa/64kDa/67kDa

Category

Primary antibody

Applications

WB

Cross-Reactivity

Human, Mouse, Rat

Background

Predicted to enable protein kinase binding activity and protein tyrosine phosphatase activity. Acts upstream of or within female meiosis I; oocyte maturation; and positive regulation of protein kinase activity. Located in cytoplasm and nucleus. Is expressed in several structures, including 1-cell stage embryo; gonad; liver; placenta; and primitive collecting duct. Orthologous to human CDC25B (cell division cycle 25B).

Recommended Dilutions

WB 1:500 - 1:2000

Immunogen Information

Gene ID

12531

Swiss Prot

Immunogen

A phospho specific peptide corresponding to residues surrounding S149 of mouse Cdc25b

Synonyms

CDC25B; Phospho-Cdc25b-S149

Contact

 | www.abclonal.com

Product Information

Source

Rabbit

Isotype

IgG

Purification

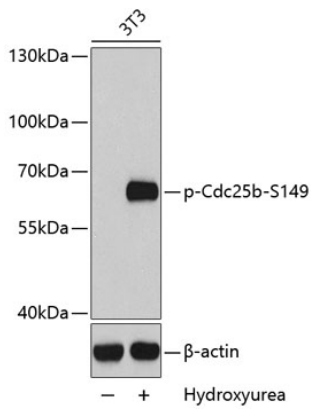
Affinity purification

Storage

Store at -20°C. Avoid freeze / thaw cycles.

Buffer: PBS with 0.02% sodium azide, 50% glycerol, pH7.3.

Validation Data



Western blot analysis of extracts from 3T3 cells using Phospho-Cdc25b-S149 antibody (AP0322).
Secondary antibody: HRP Goat Anti-Rabbit IgG (H+L) (AS014) at 1:10000 dilution.
Lysates/proteins: 25µg per lane.
Blocking buffer: 3% BSA.