

Phospho-Tau-S416 Rabbit pAb

Catalog No.: AP0294

Basic Information

Observed MW

72kDa

Calculated MW

38-81kDa

Category

Primary antibody

Applications

WB

Cross-Reactivity

Mouse, Rat

Background

Enables several functions, including Hsp90 protein binding activity; chaperone binding activity; and enzyme binding activity. Involved in several processes, including intrinsic apoptotic signaling pathway in response to oxidative stress; mRNA transport; and positive regulation of long-term synaptic depression. Located in several cellular components, including axon; cytoplasmic side of plasma membrane; and neuronal cell body. Colocalizes with microtubule. Used to study brain disease (multiple); cognitive disorder (multiple); obesity; and tauopathy (multiple). Biomarker of middle cerebral artery infarction. Human ortholog(s) of this gene implicated in dementia (multiple); neurodegenerative disease (multiple); progressive supranuclear palsy; and temporal lobe epilepsy. Orthologous to human MAPT (microtubule associated protein tau).

Recommended Dilutions

WB 1:500 - 1:1000

Immunogen Information

Gene ID

29477

Swiss Prot

Immunogen

A phospho specific peptide corresponding to residues surrounding S416 of Rat Tau

Synonyms

Tau; pTau; Mtapt; RNPTAU; MAPT_ON4R; Phospho-Tau-S416

Contact

 | www.abclonal.com

Product Information

Source

Rabbit

Isotype

IgG

Purification

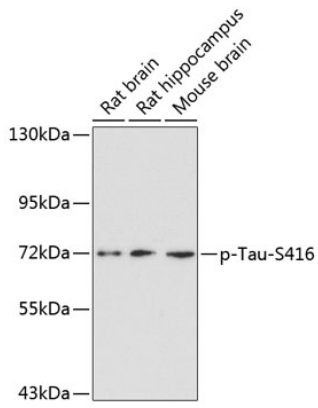
Affinity purification

Storage

Store at -20°C. Avoid freeze / thaw cycles.

Buffer: PBS with 0.02% sodium azide, 50% glycerol, pH7.3.

Validation Data



Western blot analysis of extract from rat brain, rat hippocampus and mouse brain using Phospho-Tau-S416 Antibody (AP0294).

Secondary antibody: HRP Goat Anti-Rabbit IgG (H+L) (AS014) at 1:10000 dilution.

Lysates/proteins: 25µg per lane.

Blocking buffer: 3% BSA.