

# Phospho-Cyclin B1-S147 Rabbit pAb

Catalog No.: AP0287

## Basic Information

### Observed MW

65kDa

### Calculated MW

48kDa

### Category

Primary antibody

### Applications

WB,IF/ICC

### Cross-Reactivity

Human

## Background

The protein encoded by this gene is a regulatory protein involved in mitosis. The gene product complexes with p34(cdc2) to form the maturation-promoting factor (MPF). The encoded protein is necessary for proper control of the G2/M transition phase of the cell cycle.

## Recommended Dilutions

<b>WB</b>	1:500 - 1:2000
<b>IF/ICC</b>	1:100 - 1:200

## Immunogen Information

<b>Gene ID</b>	<b>Swiss Prot</b>
891	P14635

### Immunogen

A phospho specific peptide corresponding to residues surrounding S147 of human CCNB1

### Synonyms

CCNB; Phospho-Cyclin B1-S147

## Contact

 | [www.abclonal.com](http://www.abclonal.com)

## Product Information

<b>Source</b>	<b>Isotype</b>	<b>Purification</b>
Rabbit	IgG	Affinity purification

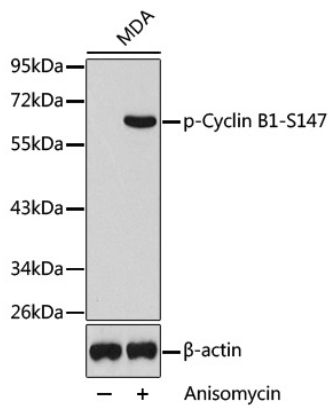
### Storage

Store at -20°C. Avoid freeze / thaw cycles.

Buffer: PBS with 0.02% sodium azide,50% glycerol,pH7.3.

## Validation Data

---



Western blot analysis of extracts from MDA cells using Phospho-Cyclin B1-S147 antibody (AP0287).  
Secondary antibody: HRP Goat Anti-Rabbit IgG (H+L) (AS014) at 1:10000 dilution.  
Lysates/proteins: 25µg per lane.  
Blocking buffer: 3% BSA.