

# Phospho-EIF4G1-S1232 Rabbit pAb

Catalog No.: AP0279

## Basic Information

**Observed MW**

175kDa

**Calculated MW**

175kDa

**Category**

Primary antibody

**Applications**

WB

**Cross-Reactivity**

Human

## Background

The protein encoded by this gene is a component of the multi-subunit protein complex EIF4F. This complex facilitates the recruitment of mRNA to the ribosome, which is a rate-limiting step during the initiation phase of protein synthesis. The recognition of the mRNA cap and the ATP-dependent unwinding of 5'-terminal secondary structure is catalyzed by factors in this complex. The subunit encoded by this gene is a large scaffolding protein that contains binding sites for other members of the EIF4F complex. A domain at its N-terminus can also interact with the poly(A)-binding protein, which may mediate the circularization of mRNA during translation. Alternative splicing results in multiple transcript variants, some of which are derived from alternative promoter usage.

## Recommended Dilutions

WB 1:500 - 1:2000

## Immunogen Information

**Gene ID**

1981

**Swiss Prot**

Q04637

**Immunogen**

A phospho specific peptide corresponding to residues surrounding S1232 of human EIF4G1

**Synonyms**

P220; EIF4F; EIF4G; EIF4GI; PARK18; EIF-4G1; Phospho-EIF4G1-S1232

## Contact

 | [www.abclonal.com](http://www.abclonal.com)

## Product Information

**Source**

Rabbit

**Isotype**

IgG

**Purification**

Affinity purification

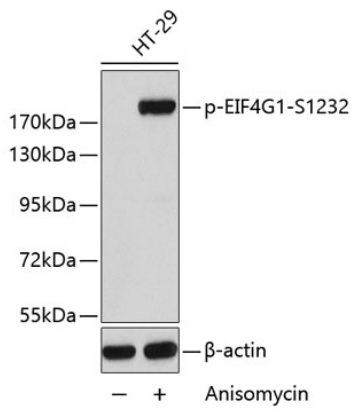
**Storage**

Store at -20°C. Avoid freeze / thaw cycles.

Buffer: PBS with 0.02% sodium azide, 50% glycerol, pH7.3.

## Validation Data

---



Western blot analysis of extracts from HT29 cells using Phospho-EIF4G1-S1232 antibody (AP0279).  
Secondary antibody: HRP Goat Anti-Rabbit IgG (H+L) (AS014) at 1:10000 dilution.  
Lysates/proteins: 25µg per lane.  
Blocking buffer: 3% BSA.