

AP0278

Leader in Biomolecular Solutions for Life Science



Phospho-EIF4B-S422 Rabbit pAb

Catalog No.: AP0278

Basic Information

Observed MW

75kDa

Calculated MW

69kDa

Category

Polyclonal Antibody

Applications

WB

Cross-Reactivity

Human,Mouse

Background

Enables RNA binding activity. Predicted to be involved in eukaryotic translation initiation factor 4F complex assembly and formation of translation preinitiation complex. Located in cytosol. Biomarker of autism spectrum disorder and major depressive disorder.

Recommended Dilutions

WB 1:500 - 1:2000

Immunogen Information

Gene ID

1975

Swiss Prot

P23588

Immunogen

A phospho specific peptide corresponding to residues surrounding S422 of human EIF4B

Synonyms

EIF-4B; PRO1843; Phospho-EIF4B-S422

Contact



www.abclonal.com

Product Information

Source

Rabbit

Isotype

IgG

Purification

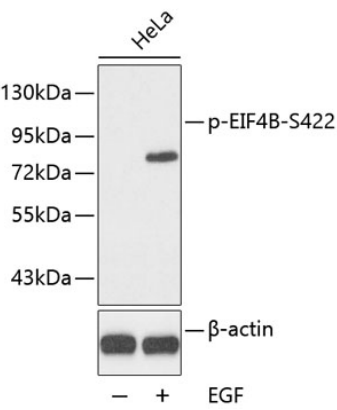
Affinity purification

Storage

Store at -20°C. Avoid freeze / thaw cycles.

Buffer: PBS with 0.02% sodium azide, 50% glycerol, pH7.3.

Validation Data



Western blot analysis of extracts from HeLa cells using phospho-EIF4B-S422 antibody (AP0278).
Secondary antibody: HRP Goat Anti-Rabbit IgG (H+L) (AS014) at 1:10000 dilution.
Lysates/proteins: 25µg per lane.
Blocking buffer: 3% BSA.