

AP0274

Leader in Biomolecular Solutions for Life Science



Phospho-Akt-Y315 Rabbit pAb

Catalog No.: AP0274 **3 Publications**

Basic Information

Observed MW

56kDa

Calculated MW

48kDa/55kDa/51kDa/54kDa

Category

Polyclonal Antibody

Applications

WB,IHC-P,IF/ICC,ELISA

Cross-Reactivity

Human,Mouse,Rat

Background

The serine-threonine protein kinase encoded by the AKT1 gene is catalytically inactive in serum-starved primary and immortalized fibroblasts. AKT1 and the related AKT2 are activated by platelet-derived growth factor. The activation is rapid and specific, and it is abrogated by mutations in the pleckstrin homology domain of AKT1. It was shown that the activation occurs through phosphatidylinositol 3-kinase. In the developing nervous system AKT is a critical mediator of growth factor-induced neuronal survival. Survival factors can suppress apoptosis in a transcription-independent manner by activating the serine/threonine kinase AKT1, which then phosphorylates and inactivates components of the apoptotic machinery. Mutations in this gene have been associated with the Proteus syndrome. Multiple alternatively spliced transcript variants have been found for this gene. [provided by RefSeq, Jul 2011]

Recommended Dilutions

WB	1:500 - 1:1000
IHC-P	1:50 - 1:100
IF/ICC	1:100 - 1:200

Immunogen Information

Gene ID

207/208/10000

Swiss Prot

P31749/P31751/Q9Y243

Immunogen

A synthetic phosphorylated peptide around Y315 of human AKT1 (NP_001014431.1).

Synonyms

AKT1/AKT2/AKT3; Phospho-Akt-Y315

Contact



www.abclonal.com

Product Information

Source

Rabbit

Isotype

IgG

Purification

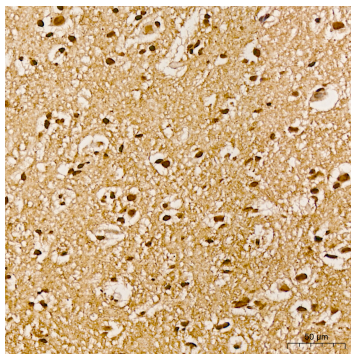
Affinity purification

Storage

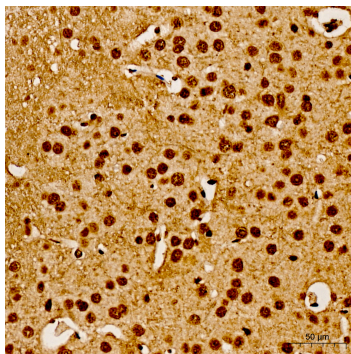
Store at -20°C. Avoid freeze / thaw cycles.

Buffer: PBS with 0.01% thimerosal, 50% glycerol, pH7.3.

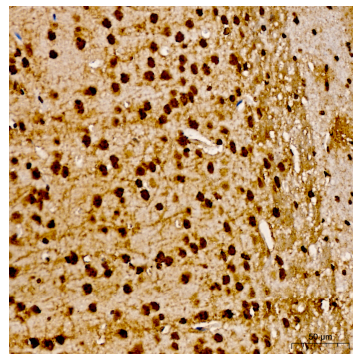
Validation Data



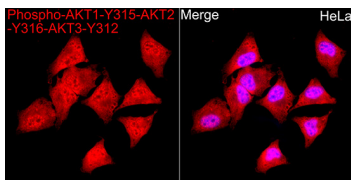
Immunohistochemistry analysis of Phospho-Akt-Y315 in paraffin-embedded human brain using Phospho-Akt-Y315 Rabbit pAb (AP0274) at dilution of 1:100 (40x lens). Perform high pressure antigen retrieval with 10 mM citrate buffer pH 6.0 before commencing with IHC staining protocol.



Immunohistochemistry analysis of Phospho-Akt-Y315 in paraffin-embedded mouse brain using Phospho-Akt-Y315 Rabbit pAb (AP0274) at dilution of 1:100 (40x lens). Perform high pressure antigen retrieval with 10 mM citrate buffer pH 6.0 before commencing with IHC staining protocol.



Immunohistochemistry analysis of Phospho-Akt-Y315 in paraffin-embedded rat brain using Phospho-Akt-Y315 Rabbit pAb (AP0274) at dilution of 1:100 (40x lens). Perform high pressure antigen retrieval with 10 mM citrate buffer pH 6.0 before commencing with IHC staining protocol.



Immunofluorescence analysis of HeLa cells using Phospho-Akt-Y315 Rabbit pAb (AP0274) at dilution of 1:100 (40x lens). Secondary antibody: Cy3 Goat Anti-Rabbit IgG (H+L) (AS007) at 1:500 dilution. Blue: DAPI for nuclear staining.