

Phospho- α -Catenin-S641 Rabbit pAb

Catalog No.: AP0273

Basic Information

Observed MW

100kDa

Calculated MW

100kDa

Category

Primary antibody

Applications

WB

Cross-Reactivity

Human, Mouse

Background

This gene encodes a member of the catenin family of proteins that play an important role in cell adhesion process by connecting cadherins located on the plasma membrane to the actin filaments inside the cell. The encoded mechanosensing protein contains three vinculin homology domains and undergoes conformational changes in response to cytoskeletal tension, resulting in the reconfiguration of cadherin-actin filament connections. Certain mutations in this gene cause butterfly-shaped pigment dystrophy.

Recommended Dilutions

WB 1:500 - 1:2000

Immunogen Information

Gene ID

1495

Swiss Prot

P35221

Immunogen

A phospho specific peptide corresponding to residues surrounding S641 of human α -Catenin

Synonyms

MDBS2; MDPT2; CAP102; Phospho- α -Catenin-S641

Contact

 | www.abclonal.com

Product Information

Source

Rabbit

Isotype

IgG

Purification

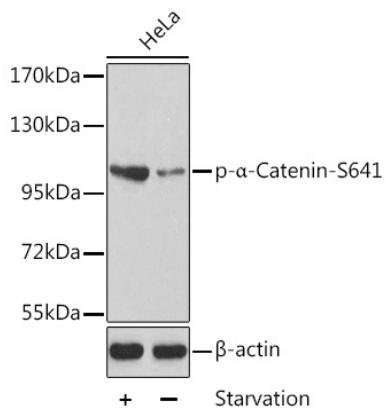
Affinity purification

Storage

Store at -20°C. Avoid freeze / thaw cycles.

Buffer: PBS with 0.02% sodium azide, 50% glycerol, pH7.3.

Validation Data



Western blot analysis of extracts from HeLa cells using Phospho- α -Catenin-S641 antibody (AP0273).
Secondary antibody: HRP Goat Anti-Rabbit IgG (H+L) (AS014) at 1:10000 dilution.
Lysates/proteins: 25 μ g per lane.
Blocking buffer: 3% BSA.