

AP0263

Leader in Biomolecular Solutions for Life Science



# Phospho-Cytokeratin 18 (KRT18)-S33 Rabbit pAb

Catalog No.: AP0263

1 Publications

## Basic Information

### Observed MW

48kDa

### Calculated MW

48kDa

### Category

Polyclonal Antibody

### Applications

WB

### Cross-Reactivity

Human

## Background

KRT18 encodes the type I intermediate filament chain keratin 18. Keratin 18, together with its filament partner keratin 8, are perhaps the most commonly found members of the intermediate filament gene family. They are expressed in single layer epithelial tissues of the body. Mutations in this gene have been linked to cryptogenic cirrhosis. Two transcript variants encoding the same protein have been found for this gene.

## Recommended Dilutions

WB 1:500 - 1:1000

## Immunogen Information

### Gene ID

3875

### Swiss Prot

P05783

### Immunogen

A phospho specific peptide corresponding to residues surrounding S33 of human KRT18

### Synonyms

K18; CK-18; CYK18; Phospho-Cytokeratin 18 (KRT18)-S33

## Contact



[www.abclonal.com](http://www.abclonal.com)

## Product Information

### Source

Rabbit

### Isotype

IgG

### Purification

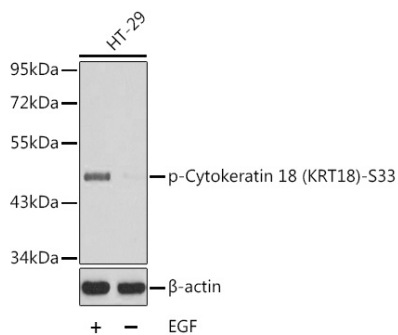
Affinity purification

### Storage

Store at -20°C. Avoid freeze / thaw cycles.

Buffer: PBS with 0.02% sodium azide, 50% glycerol, pH7.3.

## Validation Data



Western blot analysis of lysates from HT29 cells untreated or treated with EGF using Phospho-Cytokeratin 18 (KRT18)-S33 Rabbit pAb (AP0263).  
Secondary antibody: HRP Goat Anti-Rabbit IgG (H+L) (AS014) at 1:10000 dilution.  
Lysates/proteins: 25µg per lane.  
Blocking buffer: 3% BSA.