

AP0261

Leader in Biomolecular Solutions for Life Science



Phospho-GSK3 β -Y216 + GSK3 α -Y279 Rabbit pAb

Catalog No.: AP0261 **11 Publications**

Basic Information

Observed MW

47kDa,51kDa

Calculated MW

47kDa

Category

Polyclonal Antibody

Applications

WB,IHC-P,ELISA

Cross-Reactivity

Human,Mouse,Rat

Background

The protein encoded by this gene is a serine-threonine kinase, belonging to the glycogen synthase kinase subfamily. It is involved in energy metabolism, neuronal cell development, and body pattern formation. Polymorphisms in this gene have been implicated in modifying risk of Parkinson disease, and studies in mice show that overexpression of this gene may be relevant to the pathogenesis of Alzheimer disease. Alternatively spliced transcript variants encoding different isoforms have been found for this gene.

Recommended Dilutions

WB	1:500 - 1:2000
IHC-P	1:50 - 1:200

Immunogen Information

Gene ID
2931/2932

Swiss Prot
P49841

Immunogen

A synthetic phosphorylated peptide around Y216/Y279 of human GSK3 β /GSK3 α (NP_001139628/NP_063937.2).

Synonyms

GSK3B; gsk-3 β ; Phospho-GSK3 β -Y216 + GSK3 α -Y279

Contact



www.abclonal.com

Product Information

Source
Rabbit

Isotype
IgG

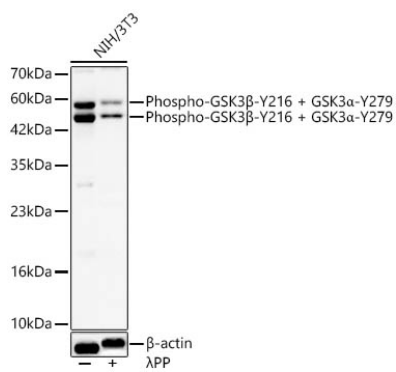
Purification
Affinity purification

Storage

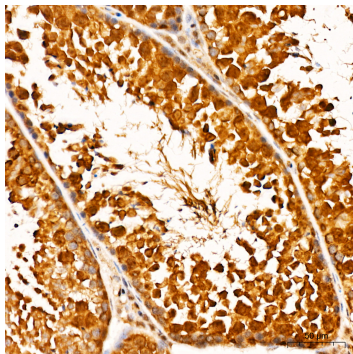
Store at -20°C. Avoid freeze / thaw cycles.

Buffer: PBS with 0.02% sodium azide,50% glycerol,pH7.3.

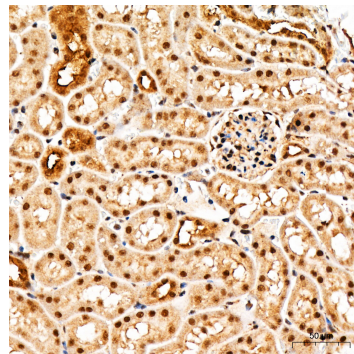
Validation Data



Western blot analysis of lysates from NIH/3T3 cells using Phospho-GSK3 β -Y216 + GSK3 α -Y279 Rabbit pAb (AP0261) at 1:1000 dilution. NIH/3T3 cells were treated by λ PP (20 μ L/400 μ l) at 37°C for 1 hour. Secondary antibody: HRP Goat Anti-Rabbit IgG (H+L) (AS014) at 1:10000 dilution. Lysates/proteins: 25 μ g per lane. Blocking buffer: 3% nonfat dry milk in TBST. Detection: ECL Basic Kit (RM00020). Exposure time: 90s.



Immunohistochemistry analysis of Phospho-GSK3 β -Y216 + GSK3 α -Y279 in paraffin-embedded mouse testis tissue using Phospho-GSK3 β -Y216 + GSK3 α -Y279 Rabbit pAb (AP0261) at a dilution of 1:100 (40x lens). High pressure antigen retrieval was performed with 0.01 M citrate buffer (pH 6.0) prior to IHC staining.



Immunohistochemistry analysis of Phospho-GSK3 β -Y216 + GSK3 α -Y279 in paraffin-embedded mouse kidney tissue using Phospho-GSK3 β -Y216 + GSK3 α -Y279 Rabbit pAb (AP0261) at a dilution of 1:100 (40x lens). High pressure antigen retrieval was performed with 0.01 M citrate buffer (pH 6.0) prior to IHC staining.