

# Phospho-IGF1R-Y1165/Y1166 Rabbit pAb

Catalog No.: AP0155

## Basic Information

### Observed MW

100kDa

### Calculated MW

155kDa

### Category

Primary antibody

### Applications

WB

### Cross-Reactivity

Human, Mouse, Rat

## Background

This receptor binds insulin-like growth factor with a high affinity. It has tyrosine kinase activity. The insulin-like growth factor I receptor plays a critical role in transformation events. Cleavage of the precursor generates alpha and beta subunits. It is highly overexpressed in most malignant tissues where it functions as an anti-apoptotic agent by enhancing cell survival. Alternatively spliced transcript variants encoding distinct isoforms have been found for this gene.

## Recommended Dilutions

WB 1:500 - 1:2000

## Immunogen Information

### Gene ID

3480

### Swiss Prot

P08069

### Immunogen

A phospho specific peptide corresponding to residues surrounding Y1165/Y1166 of human IGF1R

### Synonyms

IGFR; CD221; IGFIR; JTK13; Phospho-IGF1R-Y1165/Y1166

## Contact

 | [www.abclonal.com](http://www.abclonal.com)

## Product Information

### Source

Rabbit

### Isotype

IgG

### Purification

Affinity purification

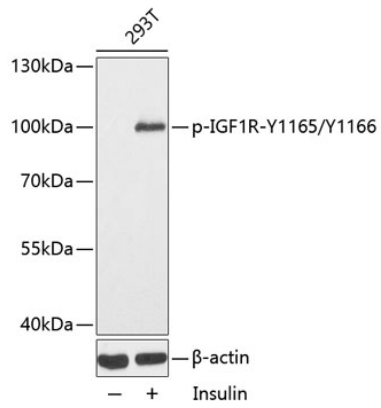
### Storage

Store at -20°C. Avoid freeze / thaw cycles.

Buffer: PBS with 0.02% sodium azide, 50% glycerol, pH7.3.

## Validation Data

---



Western blot analysis of extracts from 293T cells, using phospho-IGF1R-Y1165/Y1166 antibody (AP0155).

Secondary antibody: HRP Goat Anti-Rabbit IgG (H+L) (AS014) at 1:10000 dilution.

Lysates/proteins: 25µg per lane.

Blocking buffer: 3% BSA.