

AP0152

Leader in Biomolecular Solutions for Life Science



www.abclonal.com

Phospho-HER2/ErbB2-Y1248 Rabbit pAb

Catalog No.: AP0152 **2 Publications**

Basic Information

Observed MW

190kDa

Calculated MW

138kDa

Category

Polyclonal Antibody

Applications

WB

Cross-Reactivity

Human

Background

This gene encodes a member of the epidermal growth factor (EGF) receptor family of receptor tyrosine kinases. This protein has no ligand binding domain of its own and therefore cannot bind growth factors. However, it does bind tightly to other ligand-bound EGF receptor family members to form a heterodimer, stabilizing ligand binding and enhancing kinase-mediated activation of downstream signalling pathways, such as those involving mitogen-activated protein kinase and phosphatidylinositol-3 kinase. Allelic variations at amino acid positions 654 and 655 of isoform a (positions 624 and 625 of isoform b) have been reported, with the most common allele, Ile654/Ile655, shown here. Amplification and/or overexpression of this gene has been reported in numerous cancers, including breast and ovarian tumors. Alternative splicing results in several additional transcript variants, some encoding different isoforms and others that have not been fully characterized.

Recommended Dilutions

WB 1:500 - 1:2000

Immunogen Information

Gene ID

2064

Swiss Prot

P04626

Immunogen

A phospho specific peptide corresponding to residues surrounding Y1248 of human HER2/ERBB2

Synonyms

NEU; NGL; HER2; TKR1; CD340; HER-2; VSCN2; MLN 19; MLN-19; c-ERB2; c-ERB-2; HER-2/neu; p185(erbB2); Phospho-HER2/ErbB2-Y1248

Contact



www.abclonal.com

Product Information

Source

Rabbit

Isotype

IgG

Purification

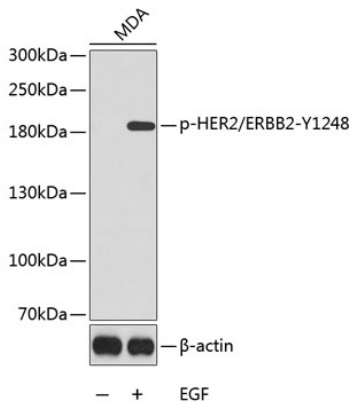
Affinity purification

Storage

Store at -20°C. Avoid freeze / thaw cycles.

Buffer: PBS with 0.02% sodium azide, 50% glycerol, pH7.3.

Validation Data



Western blot analysis of extracts from MDA cells using Phospho-HER2/ErbB2-Y1248 antibody (AP0152).

Secondary antibody: HRP Goat Anti-Rabbit IgG (H+L) (AS014) at 1:10000 dilution.

Lysates/proteins: 25µg per lane.

Blocking buffer: 3% BSA.