

# Phospho-Progesterone Receptor-S190 Rabbit pAb

Catalog No.: AP0147

## Basic Information

### Observed MW

99kDa

### Calculated MW

99kDa

### Category

Primary antibody

### Applications

WB,IF/ICC

### Cross-Reactivity

Human

## Background

This gene encodes a member of the steroid receptor superfamily. The encoded protein mediates the physiological effects of progesterone, which plays a central role in reproductive events associated with the establishment and maintenance of pregnancy. This gene uses two distinct promoters and translation start sites in the first exon to produce several transcript variants, both protein coding and non-protein coding. Two of the isoforms (A and B) are identical except for an additional 165 amino acids found in the N-terminus of isoform B and mediate their own response genes and physiologic effects with little overlap.

## Recommended Dilutions

<b>WB</b>	1:500 - 1:2000
<b>IF/ICC</b>	1:100 - 1:200

## Immunogen Information

<b>Gene ID</b>	<b>Swiss Prot</b>
5241	P06401

### Immunogen

A phospho specific peptide corresponding to residues surrounding S190 of human Progesterone Receptor

### Synonyms

PR; NR3C3; Phospho-Progesterone Receptor-S190

## Contact

 | [www.abclonal.com](http://www.abclonal.com)

## Product Information

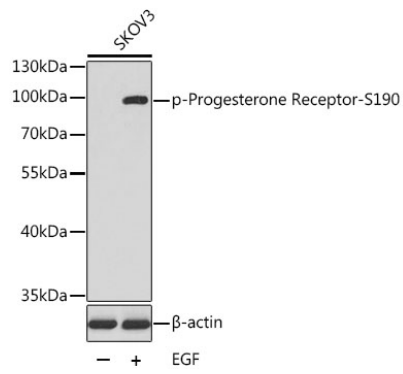
<b>Source</b>	<b>Isotype</b>	<b>Purification</b>
Rabbit	IgG	Affinity purification

### Storage

Store at -20°C. Avoid freeze / thaw cycles.  
Buffer: PBS with 0.02% sodium azide,50% glycerol,pH7.3.

## Validation Data

---



Western blot analysis of extracts from SKOV3 cells using Phospho-Progesterone Receptor-S190 antibody (AP0147).

Secondary antibody: HRP Goat Anti-Rabbit IgG (H+L) (AS014) at 1:10000 dilution.

Lysates/proteins: 25µg per lane.

Blocking buffer: 3% BSA.