

AP0130

Leader in Biomolecular Solutions for Life Science



Phospho-ATF2-S112/S94 Rabbit pAb

Catalog No.: AP0130

Basic Information

Observed MW

75kDa

Calculated MW

55kDa

Category

Polyclonal Antibody

Applications

WB

Cross-Reactivity

Human, Mouse, Rat

Background

This gene encodes a transcription factor that is a member of the leucine zipper family of DNA binding proteins. The encoded protein has been identified as a moonlighting protein based on its ability to perform mechanistically distinct functions. This protein binds to the cAMP-responsive element (CRE), an octameric palindrome. It forms a homodimer or a heterodimer with c-Jun and stimulates CRE-dependent transcription. This protein is also a histone acetyltransferase (HAT) that specifically acetylates histones H2B and H4 in vitro; thus it may represent a class of sequence-specific factors that activate transcription by direct effects on chromatin components. The encoded protein may also be involved in cell's DNA damage response independent of its role in transcriptional regulation. Several alternatively spliced transcript variants have been found for this gene

Recommended Dilutions

WB 1:500 - 1:2000

Immunogen Information

Gene ID

1386

Swiss Prot

P15336

Immunogen

A phospho specific peptide corresponding to residues surrounding S112/S94 of human ATF2

Synonyms

HB16; CREB2; TREB7; CREB-2; CRE-BP1; Phospho-ATF2-S112/S94

Contact



www.abclonal.com

Product Information

Source

Rabbit

Isotype

IgG

Purification

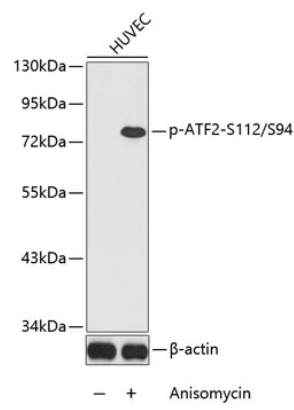
Affinity purification

Storage

Store at -20°C. Avoid freeze / thaw cycles.

Buffer: PBS with 0.02% sodium azide, 50% glycerol, pH 7.3.

Validation Data



Western blot analysis of extracts from HUVEC cells using Phospho-ATF2-S112/S94 antibody (AP0130).
Secondary antibody: HRP Goat Anti-Rabbit IgG (H+L) (AS014) at 1:10000 dilution.
Lysates/proteins: 25µg per lane.
Blocking buffer: 3% BSA.