

AP0129

Leader in Biomolecular Solutions for Life Science



# Phospho-ATF2-T71/T53 Rabbit pAb

Catalog No.: AP0129

## Basic Information

### Observed MW

75kDa

### Calculated MW

55kDa

### Category

Polyclonal Antibody

### Applications

WB

### Cross-Reactivity

Human, Mouse, Rat

## Background

This gene encodes a transcription factor that is a member of the leucine zipper family of DNA binding proteins. The encoded protein has been identified as a moonlighting protein based on its ability to perform mechanistically distinct functions. This protein binds to the cAMP-responsive element (CRE), an octameric palindrome. It forms a homodimer or a heterodimer with c-Jun and stimulates CRE-dependent transcription. This protein is also a histone acetyltransferase (HAT) that specifically acetylates histones H2B and H4 in vitro; thus it may represent a class of sequence-specific factors that activate transcription by direct effects on chromatin components. The encoded protein may also be involved in cell's DNA damage response independent of its role in transcriptional regulation. Several alternatively spliced transcript variants have been found for this gene.

## Recommended Dilutions

WB 1:500 - 1:2000

## Immunogen Information

### Gene ID

1386

### Swiss Prot

P15336

### Immunogen

A phospho specific peptide corresponding to residues surrounding T71/T53 of human ATF2

### Synonyms

HB16; CREB2; TREB7; CREB-2; CRE-BP1; Phospho-ATF2-T71/T53

## Contact



[www.abclonal.com](http://www.abclonal.com)

## Product Information

### Source

Rabbit

### Isotype

IgG

### Purification

Affinity purification

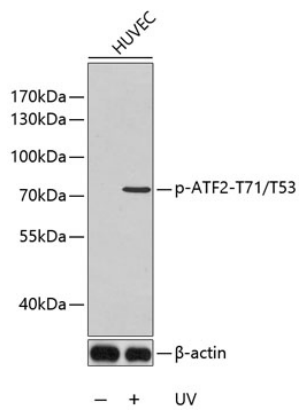
### Storage

Store at -20°C. Avoid freeze / thaw cycles.

Buffer: PBS with 0.02% sodium azide, 50% glycerol, pH 7.3.

## Validation Data

---



Western blot analysis of extracts from HUVEC cells using Phospho-ATF2-T71/T53 antibody (AP0129).  
Secondary antibody: HRP Goat Anti-Rabbit IgG (H+L) (AS014) at 1:10000 dilution.  
Lysates/proteins: 25 $\mu$ g per lane.  
Blocking buffer: 3% BSA.