

Phospho-c-Jun-S243 Rabbit pAb

Catalog No.: AP0126

Basic Information

Observed MW

42kDa

Calculated MW

36kDa

Category

Primary antibody

Applications

WB

Cross-Reactivity

Human

Background

This gene is the putative transforming gene of avian sarcoma virus 17. It encodes a protein which is highly similar to the viral protein, and which interacts directly with specific target DNA sequences to regulate gene expression. This gene is intronless and is mapped to 1p32-p31, a chromosomal region involved in both translocations and deletions in human malignancies.

Recommended Dilutions

WB 1:500 - 1:2000

Immunogen Information

Gene ID

3725

Swiss Prot

P05412

Immunogen

A phospho specific peptide corresponding to residues surrounding S243 of human c-JUN

Synonyms

AP1; p39; AP-1; cJUN; c-Jun; Phospho-c-Jun-S243

Contact

 | www.abclonal.com

Product Information

Source

Rabbit

Isotype

IgG

Purification

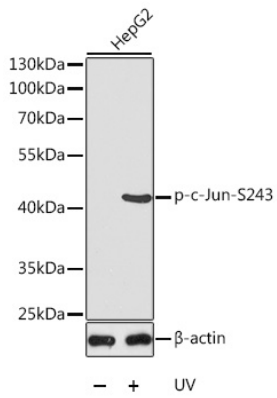
Affinity purification

Storage

Store at -20°C. Avoid freeze / thaw cycles.

Buffer: PBS with 0.02% sodium azide, 50% glycerol, pH7.3.

Validation Data



Western blot analysis of extracts from HepG2 cells using Phospho-c-Jun-S243 antibody (AP0126).
Secondary antibody: HRP Goat Anti-Rabbit IgG (H+L) (AS014) at 1:10000 dilution.
Lysates/proteins: 25µg per lane.
Blocking buffer: 3% BSA.