

AP0066

Leader in Biomolecular Solutions for Life Science



Phospho-MAP2K3-S189/MAP2K6-S207 Rabbit pAb

Catalog No.: AP0066

Basic Information

Observed MW

40kDa/41kDa

Calculated MW

36kDa/39kDa/31kDa/37kDa

Category

Polyclonal Antibody

Applications

WB,ELISA

Cross-Reactivity

Human,Mouse,Rat

Background

The protein encoded by this gene is a dual specificity protein kinase that belongs to the MAP kinase kinase family. This kinase is activated by mitogenic and environmental stress, and participates in the MAP kinase-mediated signaling cascade. It phosphorylates and thus activates MAPK14/p38-MAPK. This kinase can be activated by insulin, and is necessary for the expression of glucose transporter. Expression of RAS oncogene is found to result in the accumulation of the active form of this kinase, which thus leads to the constitutive activation of MAPK14, and confers oncogenic transformation of primary cells. The inhibition of this kinase is involved in the pathogenesis of Yersinia pseudotuberculosis. Multiple alternatively spliced transcript variants that encode distinct isoforms have been reported for this gene. [provided by RefSeq, Jul 2008]

Recommended Dilutions

WB 1:500 - 1:1000

Immunogen Information

Gene ID

5606/5608

Swiss Prot

P46734/P52564

Immunogen

A synthetic phosphorylated peptide around S189 of human MAP2K6MAP2K3 (NP_002747.2).

Synonyms

MAP2K3/MAP2K6; Phospho-MAP2K3-S189/MAP2K6-S207

Contact



www.abclonal.com

Product Information

Source

Rabbit

Isotype

IgG

Purification

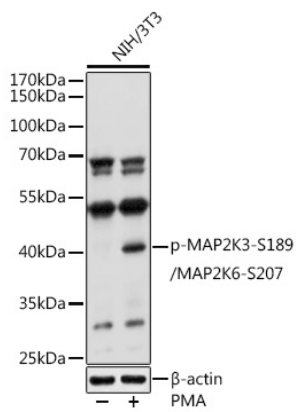
Affinity purification

Storage

Store at -20°C. Avoid freeze / thaw cycles.

Buffer: PBS with 0.01% thimerosal, 50% glycerol, pH7.3.

Validation Data



Western blot analysis of extracts of NIH/3T3 cells, using Phospho-MAP2K3-S189/MAP2K6-S207 antibody (AP0066) at 1:1000 dilution. NIH/3T3 cells were treated by PMA/TPA (200 nM) at 37°C for 30 minutes after serum-starvation overnight.

Secondary antibody: HRP Goat Anti-Rabbit IgG (H+L) (AS014) at 1:10000 dilution.

Lysates/proteins: 25µg per lane.

Blocking buffer: 3% nonfat dry milk in TBST.

Detection: ECL Basic Kit (RM00020).

Exposure time: 5s.