

AP0050

Leader in Biomolecular Solutions for Life Science



Phospho-c-Jun-S243 Rabbit pAb

Catalog No.: AP0050

Basic Information

Observed MW

Refer to figures

Calculated MW

36kDa

Category

Polyclonal Antibody

Applications

WB,IHC-P,ELISA

Cross-Reactivity

Human,Mouse,Rat

Background

This gene is the putative transforming gene of avian sarcoma virus 17. It encodes a protein which is highly similar to the viral protein, and which interacts directly with specific target DNA sequences to regulate gene expression. This gene is intronless and is mapped to 1p32-p31, a chromosomal region involved in both translocations and deletions in human malignancies.

Recommended Dilutions

WB 1:500 - 1:2000

IHC-P 1:50 - 1:200

Immunogen Information

Gene ID

3725

Swiss Prot

P05412

Immunogen

A synthetic phosphorylated peptide around S243 of human Jun (NP_002219.1).

Synonyms

AP1; p39; AP-1; cJUN; c-Jun; Phospho-c-Jun-S243

Contact

 www.abclonal.com

Product Information

Source

Rabbit

Isotype

IgG

Purification

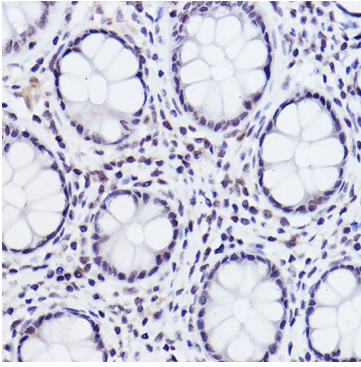
Affinity purification

Storage

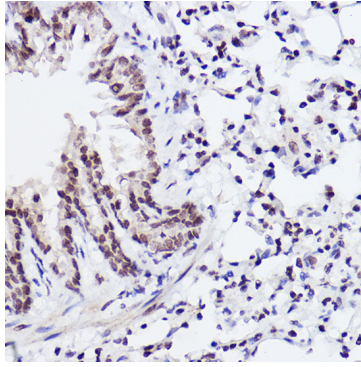
Store at -20°C. Avoid freeze / thaw cycles.

Buffer: PBS with 0.02% sodium azide,50% glycerol,pH7.3.

Validation Data



Immunohistochemistry analysis of paraffin-embedded Human colon carcinoma using Phospho-c-Jun-S243 Rabbit pAb (AP0050) at dilution of 1:20 (40x lens). Perform high pressure antigen retrieval with 10 mM citrate buffer pH 6.0 before commencing with IHC staining protocol.



Immunohistochemistry analysis of paraffin-embedded Rat lung using Phospho-c-Jun-S243 Rabbit pAb (AP0050) at dilution of 1:20 (40x lens). Perform high pressure antigen retrieval with 10 mM citrate buffer pH 6.0 before commencing with IHC staining protocol.