

Phospho-GSK3 β -S9 Rabbit pAb

Catalog No.: AP0039 **11 Publications**

Basic Information

Catalog No.

AP0039

Observed MW

46kDa

Calculated MW

46kDa/48kDa

Category

Primary antibody

Applications

WB, IF, IP

Cross-Reactivity

Human, Mouse, Rat

Recommended Dilutions

WB	1:500 - 1:2000
IF	1:50 - 1:200
IP	1:50 - 1:200

Contact

 | www.abclonal.com

Background

The protein encoded by this gene is a serine-threonine kinase, belonging to the glycogen synthase kinase subfamily. It is involved in energy metabolism, neuronal cell development, and body pattern formation. Polymorphisms in this gene have been implicated in modifying risk of Parkinson disease, and studies in mice show that overexpression of this gene may be relevant to the pathogenesis of Alzheimer disease. Alternatively spliced transcript variants encoding different isoforms have been found for this gene.

Immunogen Information

Gene ID

2932

Swiss Prot

P49841

ImmunogenA synthetic phosphorylated peptide around S9 of human GSK3 β (NP_001139628.1).**Synonyms**GSK3B;gsk-3 β

Product Information

Source

Rabbit

Isotype

IgG

Purification

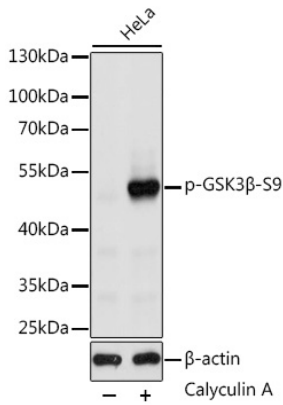
Affinity purification

Storage

Store at -20°C. Avoid freeze / thaw cycles.

Buffer: PBS with 0.02% sodium azide,50% glycerol,pH7.3.

Validation Data



Western blot analysis of extracts of HeLa cells, using Phospho-GSK3β-S9 antibody (AP0039) at 1:2000 dilution. HeLa cells were treated by Calyculin A (100nM) for 30 minutes after serum-starvation overnight.

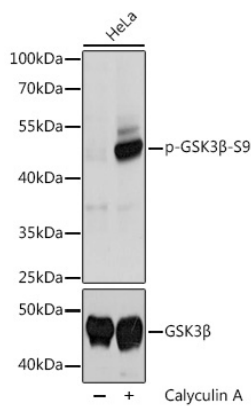
Secondary antibody: HRP Goat Anti-Rabbit IgG (H+L) (AS014) at 1:10000 dilution.

Lysates/proteins: 25ug per lane.

Blocking buffer: 3% BSA.

Detection: ECL Basic Kit (RM00020).

Exposure time: 1s.



Western blot analysis of extracts of HeLa cells, using Phospho-GSK3β-S9 pAb (AP0039) at 1:2000 dilution or GSK3β antibody (A2081). HeLa cells were treated by Calyculin A (100 nM) at 37°C for 30 minutes after serum-starvation overnight.

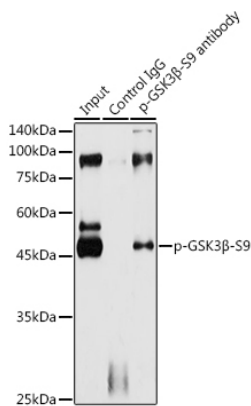
Secondary antibody: HRP Goat Anti-Rabbit IgG (H+L) (AS014) at 1:10000 dilution.

Lysates/proteins: 25ug per lane.

Blocking buffer: 3% BSA.

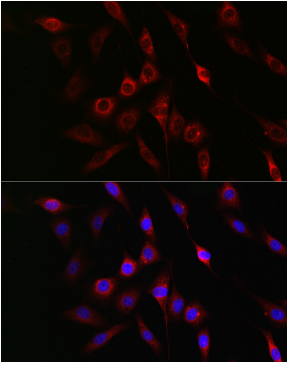
Detection: ECL Basic Kit (RM00020).

Exposure time: 1s.

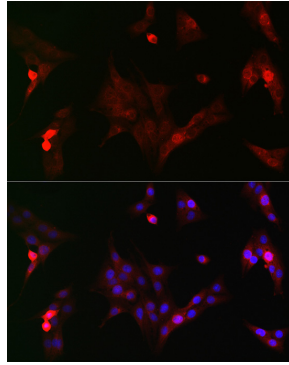


Immunoprecipitation analysis of 300ug extracts of HeLa cells using 3ug Phospho-GSK3β-S9 antibody (AP0039). Western blot was performed from the immunoprecipitate using Phospho-GSK3β-S9 antibody (AP0039) at a dilution of 1:1000.

Validation Data



Immunofluorescence analysis of NIH/3T3 cells using Phospho-GSK3 β -S9 Rabbit pAb (AP0039) at dilution of 1:50 (40x lens).
Blue: DAPI for nuclear staining.



Immunofluorescence analysis of PC-12 cells using Phospho-GSK3 β -S9 Rabbit pAb (AP0039) at dilution of 1:50 (40x lens).
Blue: DAPI for nuclear staining.