

AP0012

Leader in Biomolecular Solutions for Life Science



Phospho-B-Raf-S445 Rabbit pAb

Catalog No.: AP0012

3 Publications

Basic Information

Observed MW

100kDa

Calculated MW

84kDa

Category

Polyclonal Antibody

Applications

WB,ELISA

Cross-Reactivity

Human,Rat

Background

This gene encodes a protein belonging to the RAF family of serine/threonine protein kinases. This protein plays a role in regulating the MAP kinase/ERK signaling pathway, which affects cell division, differentiation, and secretion. Mutations in this gene, most commonly the V600E mutation, are the most frequently identified cancer-causing mutations in melanoma, and have been identified in various other cancers as well, including non-Hodgkin lymphoma, colorectal cancer, thyroid carcinoma, non-small cell lung carcinoma, hairy cell leukemia and adenocarcinoma of lung. Mutations in this gene are also associated with cardiofaciocutaneous, Noonan, and Costello syndromes, which exhibit overlapping phenotypes. A pseudogene of this gene has been identified on the X chromosome.

Recommended Dilutions

WB 1:500 - 1:2000

Immunogen Information

Gene ID

673

Swiss Prot

P15056

Immunogen

A synthetic phosphorylated peptide around S445 of human BRAF (NP_004324.2).

Synonyms

NS7; B-raf; BRAF1; RAFB1; B-RAF1; BRAF-1; Phospho-B-Raf-S445

Contact



www.abclonal.com

Product Information

Source

Rabbit

Isotype

IgG

Purification

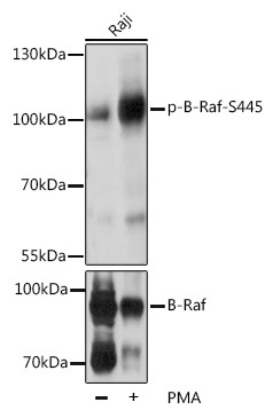
Affinity purification

Storage

Store at -20°C. Avoid freeze / thaw cycles.

Buffer: PBS with 0.02% sodium azide,50% glycerol,pH7.3.

Validation Data



Western blot analysis of extracts of Raji cells, using Phospho-B-Raf-S445 pAb (AP0012) at 1:2000 dilution or BRAF antibody (A0038).Raji cells were treated by PMA/TPA (200nM) for 30 minutes.
Secondary antibody: HRP Goat Anti-Rabbit IgG (H+L) (AS014) at 1:10000 dilution.
Lysates/proteins: 25µg per lane.
Blocking buffer: 3% BSA.
Detection: ECL Basic Kit (RM00020).
Exposure time: 10s.