

AP0005

Leader in Biomolecular Solutions for Life Science



# Phospho-AKT2-S474 Rabbit pAb

Catalog No.: AP0005

3 Publications

## Basic Information

### Observed MW

60kDa

### Calculated MW

56kDa

### Category

Polyclonal Antibody

### Applications

WB,ELISA

### Cross-Reactivity

Human,Mouse,Rat

## Background

This gene is a putative oncogene encoding a protein belonging to a subfamily of serine/threonine kinases containing SH2-like (Src homology 2-like) domains, which is involved in signaling pathways. The gene serves as an oncogene in the tumorigenesis of cancer cells. For example, its overexpression contributes to the malignant phenotype of a subset of human ductal pancreatic cancers. The encoded protein is a general protein kinase capable of phosphorylating several known proteins, and has also been implicated in insulin signaling.

## Recommended Dilutions

WB 1:500 - 1:2000

## Immunogen Information

### Gene ID

208

### Swiss Prot

P31751

### Immunogen

A synthetic phosphorylated peptide around S474 of human AKT2 (NP\_001617.1).

### Synonyms

PKBB; PRKBB; HIHGHH; PKBBETA; RAC-BETA; Phospho-AKT2-S474

## Contact



[www.abclonal.com](http://www.abclonal.com)

## Product Information

### Source

Rabbit

### Isotype

IgG

### Purification

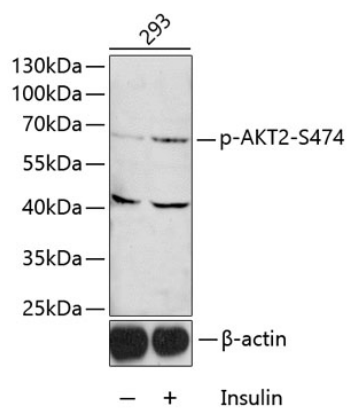
Affinity purification

### Storage

Store at -20°C. Avoid freeze / thaw cycles.

Buffer: PBS with 0.01% thimerosal, 50% glycerol, pH 7.3.

## Validation Data



Western blot analysis of lysates from 293 cells, using Phospho-AKT2-S474 Rabbit pAb (AP0005) 1:1000 dilution..  
Secondary antibody: HRP Goat Anti-Rabbit IgG (H+L) (AS014) at 1:10000 dilution.  
Lysates/proteins: 25µg per lane.  
Blocking buffer: 3% BSA.