

HA-Tag Rabbit mAb

Catalog No.: AE105 **Recombinant** **1 Publications**

Basic Information

Observed MW

65kDa

Calculated MW

Category

Tag antibody

Applications

ELISA, WB, IF/ICC, IP

Cross-Reactivity

Species independent

CloneNo number

ARC59578

Background

Protein tags are peptide sequences genetically grafted onto a recombinant protein. Often these tags are removable by chemical agents or by enzymatic means, such as proteolysis or intein splicing. Tags are attached to proteins for various purposes. Epitope tags are short peptide sequences which are chosen because high-affinity antibodies can be reliably produced in many different species. These are usually derived from viral genes, which explain their high immunoreactivity. Epitope tags include V5-tag, Myc-tag, HA-tag and NE-tag. These tags are particularly useful for western blotting, immunofluorescence and immunoprecipitation experiments, although they also find use in antibody purification.

Recommended Dilutions

WB	1:2000 - 1:6000
IF/ICC	1:50 - 1:200
IP	1:500 - 1:2000

Immunogen Information

Gene ID

Swiss Prot

Immunogen

A synthetic peptide corresponding to HA tag.

Synonyms

HA; HA tag; HA-tag

Contact

 | www.abclonal.com

Product Information

Source

Rabbit

Isotype

IgG1, Kappa

Purification

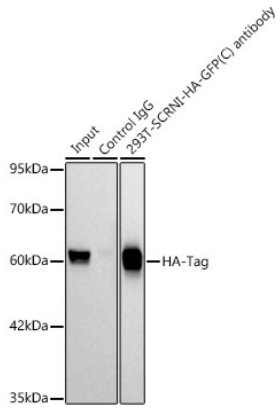
Affinity purification

Storage

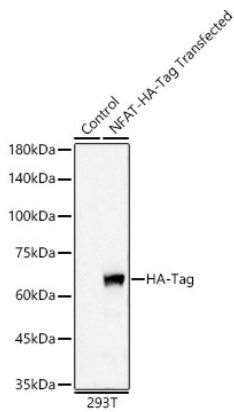
Store at -20°C. Avoid freeze / thaw cycles.

Buffer: PBS with 0.05% proclin300, 0.05% BSA, 50% glycerol, pH7.3.

Validation Data



Immunoprecipitation analysis of 300 µg extracts of 293T-SCRNI-HA-GFP-N cells using 3 µg HA-Tag Rabbit mAb (AE105). Western blot was performed from the immunoprecipitate using HA-Tag Rabbit mAb (AE105) at a dilution of 1:6000.



Western blot analysis of 293F transfected by HA-tag, using HA-Tag Rabbit mAb (AE105) at 1:5000 dilution.

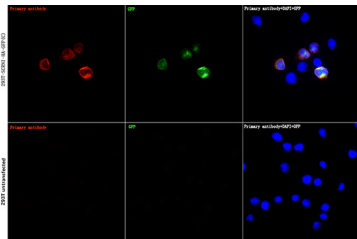
Secondary antibody: HRP Goat Anti-Rabbit IgG (H+L) (AS014) at 1:10000 dilution.

Lysates/proteins: 25µg per lane.

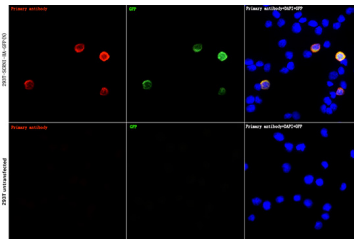
Blocking buffer: 3% nonfat dry milk in TBST.

Detection: ECL Basic Kit (RM00020).

Exposure time: 1s.



Immunofluorescence analysis of 293T-SCRNI-HA-GFP(C) and 293T cells using HA-Tag Rabbit mAb (AE105) at dilution of 1:100 (40x lens). Blue: DAPI for nuclear staining.



Immunofluorescence analysis of 293T-SCRNI-HA-GFP(N) and 293T cells using HA-Tag Rabbit mAb (AE105) at dilution of 1:100 (40x lens). Blue: DAPI for nuclear staining.