

Myc-Tag Rabbit mAb

Catalog No.: AE070 **Recombinant** **25 Publications**

Basic Information

Observed MW

58kDa(NLK)/72kDa(YAP1)/55kDa(PTEN)

Calculated MW

Category

Tag antibody

Applications

ELISA, WB, IF/ICC, IP

Cross-Reactivity

Species independent


CloneNo number

ARC5004-12

Recommended Dilutions

WB	1:10000 - 1:140000
IF/ICC	1:50 - 1:200
IP	1:500-1:1000

Contact

 | www.abclonal.com

Background

Protein tags are peptide sequences genetically grafted onto a recombinant protein. Often these tags are removable by chemical agents or by enzymatic means, such as proteolysis or intein splicing. Tags are attached to proteins for various purposes. Epitope tags are short peptide sequences which are chosen because high-affinity antibodies can be reliably produced in many different species. These are usually derived from viral genes, which explain their high immunoreactivity. Epitope tags include V5-tag, Myc-tag, HA-tag and NE-tag. These tags are particularly useful for western blotting, immunofluorescence and immunoprecipitation experiments, although they also find use in antibody purification.

Immunogen Information

Gene ID **Swiss Prot**

Immunogen

A synthetic peptide corresponding to Myc tag.

Synonyms

Myc; Myc tag; Myc-tag; Myc-Tag

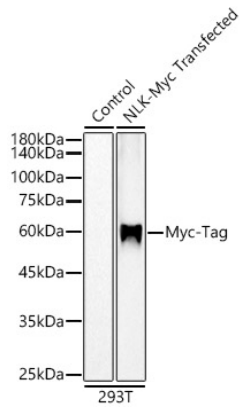
Product Information

Source	Isotype	Purification
Rabbit	IgG	Affinity purification

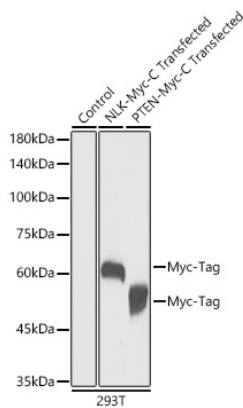
Storage

Store at -20°C. Avoid freeze / thaw cycles.
Buffer: PBS with 0.05% proclin300, 0.05% BSA, 50% glycerol, pH7.3.

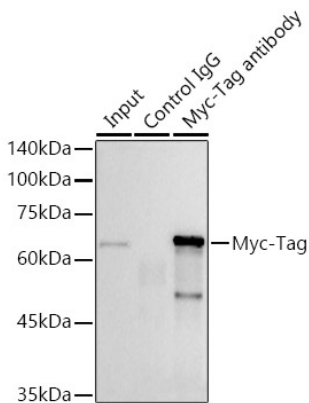
Validation Data



Western blot analysis of extracts of normal 293T cells, 293T transfected with NLK Protein, using Myc-Tag Rabbit mAb antibody (AE070) at 1:120000 dilution.
Secondary antibody: HRP Goat Anti-Rabbit IgG (H+L) (AS014) at 1:10000 dilution.
Lysates/proteins: 25µg per lane.
Blocking buffer: 3% nonfat dry milk in TBST.
Detection: ECL Basic Kit (RM00020).
Exposure time: 10s.

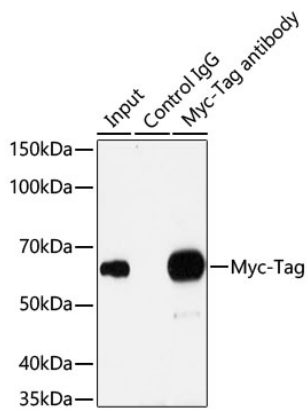


Western blot analysis of extracts of normal 293T cells, 293T transfected with NLK Protein and 293T transfected with PTEN Protein, using Myc-Tag antibody (AE070) at 1:20000 dilution.
Secondary antibody: HRP Goat Anti-Rabbit IgG (H+L) (AS014) at 1:10000 dilution.
Lysates/proteins: 25µg per lane.
Blocking buffer: 3% nonfat dry milk in TBST.
Detection: ECL Basic Kit (RM00020).
Exposure time: 1s.

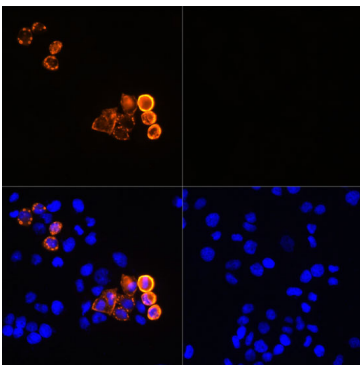


Immunoprecipitation analysis of 300µg extract cell lysate from 293T cells transfected with NLK expression vector containing a Myc-Tag with 3 µg Myc-Tag Rabbit mAb antibody (AE070). Western blot was performed from the immunoprecipitate using Myc-Tag Rabbit mAb antibody (AE070) at 1:5000 dilution.

Validation Data



Immunoprecipitation analysis of 200ug extracts of 293T cells transfected with NLK expression vector containing a Myc-Tag with 3 μ g Myc-Tag Rabbit mAb (AE070 1:100). Western blot was performed from the immunoprecipitate using Myc-Tag Rabbit mAb (AE070) at 1:1000 dilution.



Immunofluorescence analysis of HeLa cells (Left: HeLa cells overexpressing recombinant protein with Myc-Tag; Right: Negative control without Myc-Tag) use Rabbit anti Myc-Tag mAb(AE070) at dilution of 1:100. Blue: DAPI for nuclear staining.