

# HRP-conjugated $\beta$ -Actin Rabbit mAb

Catalog No.: AC028 **Recombinant** **40 Publications**

## Basic Information

### Observed MW

42kDa

### Calculated MW

42kDa

### Category

Loading control antibody

### Applications

ELISA, WB

### Cross-Reactivity

Human, Mouse, Rat, Chicken, Zebrafish, Pig

### CloneNo number

ARC5115-01

## Recommended Dilutions

**WB** 1:2000 - 1:50000

## Background

This gene encodes one of six different actin proteins. Actins are highly conserved proteins that are involved in cell motility, structure, integrity, and intercellular signaling. The encoded protein is a major constituent of the contractile apparatus and one of the two nonmuscle cytoskeletal actins that are ubiquitously expressed. Mutations in this gene cause Baraitser-Winter syndrome 1, which is characterized by intellectual disability with a distinctive facial appearance in human patients. Numerous pseudogenes of this gene have been identified throughout the human genome.

## Immunogen Information

<b>Gene ID</b>	<b>Swiss Prot</b>
60	P60709

### Immunogen

Recombinant protein of human HRP-conjugated  $\beta$ -Actin

### Synonyms

BRWS1; PS1TP5BP1; HRP-conjugated  $\beta$ -Actin

## Contact

 | [www.abclonal.com](http://www.abclonal.com)

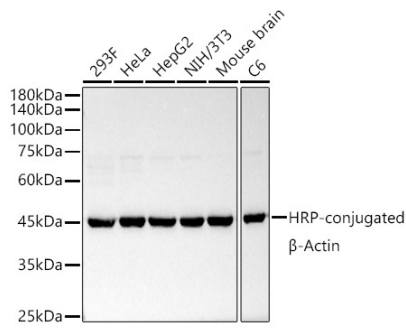
## Product Information

<b>Source</b>	<b>Isotype</b>	<b>Purification</b>
Rabbit	IgG	Affinity purification

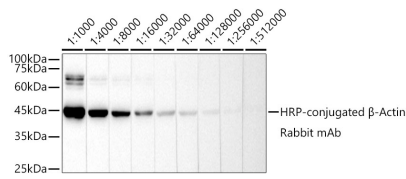
### Storage

Store at -20°C. Avoid freeze / thaw cycles.  
Buffer: PBS with 0.05% proclin300, 0.05% BSA, 50% glycerol, pH7.3.

## Validation Data



Western blot analysis of extracts of various cell lines, using HRP-conjugated  $\beta$ -Actin Rabbit mAb antibody (AC028) at 1:50000 dilution.  
Lysates/proteins: 25 $\mu$ g per lane.  
Blocking buffer: 3% nonfat dry milk in TBST.  
Detection: ECL Basic Kit (RM00020).  
Exposure time: 3s.



Western blot analysis of extracts of HeLa, using HRP-conjugated  $\beta$ -Actin Rabbit mAb (AC028) at 1:1000- 1:512000 dilution.  
Lysates/proteins: 25 $\mu$ g per lane.  
Blocking buffer: 3% nonfat dry milk in TBST.  
Detection: ECL Basic Kit (RM00020).  
Exposure time: 1s.