

β-Actin Rabbit mAb (High Dilution)

Catalog No.: AC026 **Recombinant** **547 Publications**

Basic Information

Catalog No.

AC026

Observed MW

42kDa

Calculated MW

41kDa

Category

Loading control antibody

Applications

WB, IHC

Cross-Reactivity

Human, Mouse, Rat, Chicken,
Zebrafish, Pig, Oryza sativa

Recommended Dilutions

WB 1:50000 - 1:200000

IHC 1:200 - 1:2000

Contact

 | www.abclonal.com

Background

This gene encodes one of six different actin proteins. Actins are highly conserved proteins that are involved in cell motility, structure, and integrity. This actin is a major constituent of the contractile apparatus and one of the two nonmuscle cytoskeletal actins.

Note: Dilution method

Put 5ul AC026 into 45 ul buffer(with 50% glycerol), diluted 1:10,000 for using. The diluted antibody can be stored at -20°C without aliquot.

Immunogen Information

Gene ID

60

Swiss Prot

P60709

Immunogen

Recombinant protein of human β-actin

Synonyms

ACTB;BRWS1;PS1TP5BP1;beta actin;actin

Product Information

Source

Rabbit

Isotype

IgG

Purification

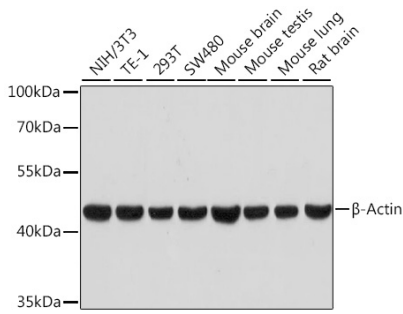
Affinity purification

Storage

Store at -20°C. Avoid freeze / thaw cycles.

Buffer: PBS with 0.09% sodium azide,50% glycerol,pH7.3.

Validation Data



Western blot analysis of extracts of various cell lines, using β -actin antibody (AC026) at 1:100000 dilution.

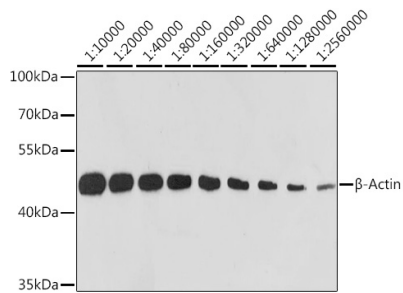
Secondary antibody: HRP Goat Anti-Rabbit IgG (H+L) (AS014) at 1:10000 dilution.

Lysates/proteins: 25ug per lane.

Blocking buffer: 3% nonfat dry milk in TBST.

Detection: ECL Basic Kit (RM00020).

Exposure time: 30s.



Western blot analysis of extracts of HeLa cells, using β -actin antibody (AC026) at 1:10000-1:2560000 dilution.

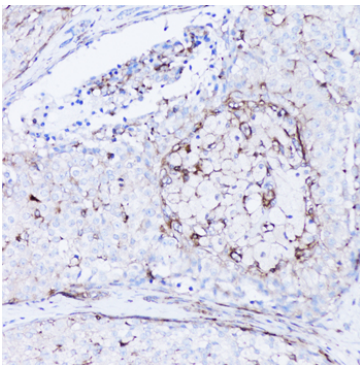
Secondary antibody: HRP Goat Anti-Rabbit IgG (H+L) (AS014) at 1:10000 dilution.

Lysates/proteins: 25ug per lane.

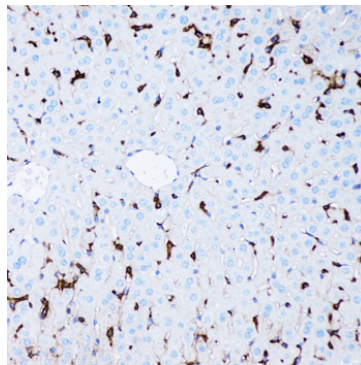
Blocking buffer: 3% nonfat dry milk in TBST.

Detection: ECL Basic Kit (RM00020).

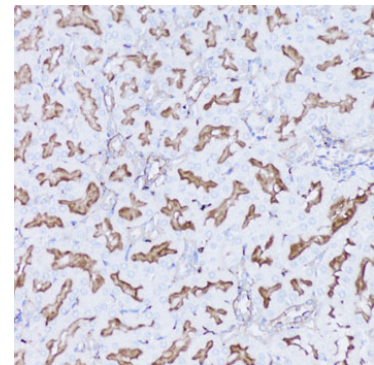
Exposure time: 10s.



Immunohistochemistry of paraffin-embedded human breast cancer using β -actin antibody (AC026) at dilution of 1:100 (20x lens).



Immunohistochemistry of paraffin-embedded mouse liver using β -actin antibody (AC026) at dilution of 1:100 (20x lens).



Immunohistochemistry of paraffin-embedded rat kidney using β -actin antibody (AC026) at dilution of 1:100 (20x lens).