

AC002

Leader in Biomolecular Solutions for Life Science



GAPDH Mouse mAb

Catalog No.: AC002 **677 Publications**

Basic Information

Observed MW

36kDa/

Calculated MW

36kDa

Category

Mouse Monoclonal Antibody

Applications

WB,IHC-P,IF/ICC,ELISA

Cross-Reactivity

Human,Mouse,Rat

CloneNo number

AMC0062R

Background

This gene encodes a member of the glyceraldehyde-3-phosphate dehydrogenase protein family. The encoded protein has been identified as a moonlighting protein based on its ability to perform mechanistically distinct functions. The product of this gene catalyzes an important energy-yielding step in carbohydrate metabolism, the reversible oxidative phosphorylation of glyceraldehyde-3-phosphate in the presence of inorganic phosphate and nicotinamide adenine dinucleotide (NAD). The encoded protein has additionally been identified to have uracil DNA glycosylase activity in the nucleus. Also, this protein contains a peptide that has antimicrobial activity against *E. coli*, *P. aeruginosa*, and *C. albicans*. Studies of a similar protein in mouse have assigned a variety of additional functions including nitrosylation of nuclear proteins, the regulation of mRNA stability, and acting as a transferrin receptor on the cell surface of macrophage. Many pseudogenes similar to this locus are present in the human genome. Alternative splicing results in multiple transcript variants.

Recommended Dilutions

WB	1:5000 - 1:50000
IHC-P	1:50 - 1:200
IF/ICC	1:50 - 1:200

Immunogen Information

Gene ID

2597

Swiss Prot

P04406

Immunogen

Recombinant fusion protein containing a sequence corresponding to amino acids 1-335 of human GAPDH (P04406).

Synonyms

G3PD; GAPD; HEL-S-162eP; GAPDH

Contact



www.abclonal.com

Product Information

Source

Mouse

Isotype

IgG

Purification

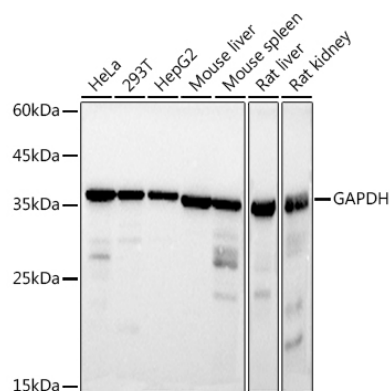
Affinity purification

Storage

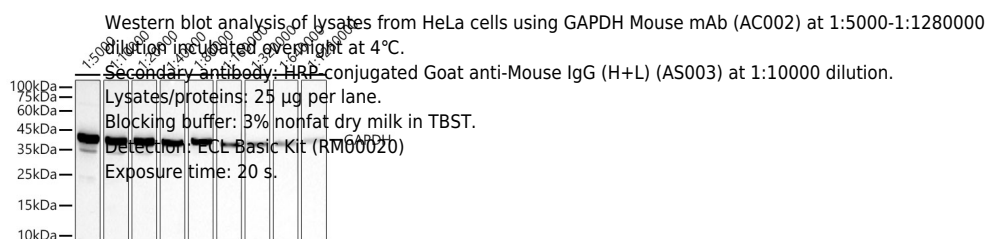
Store at -20°C. Avoid freeze / thaw cycles.

Buffer: PBS with 0.05% proclin300,50% glycerol,pH7.3.

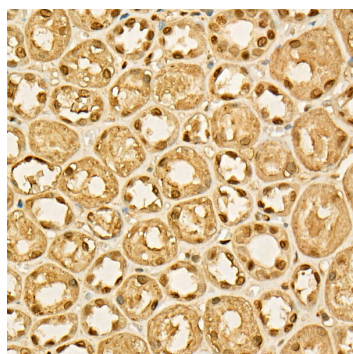
Validation Data



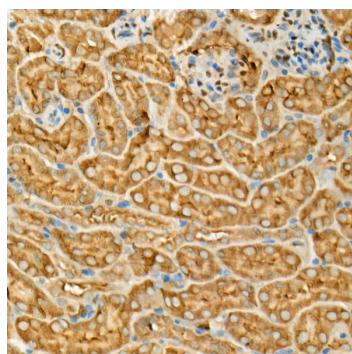
Western blot analysis of various lysates using GAPDH Mouse mAb (AC002) at 1:10000 dilution incubated overnight at 4°C.
 Secondary antibody: HRP Goat Anti-Mouse IgG (H+L) (AS003) at 1:10000 dilution.
 Lysates/proteins: 25µg per lane.
 Blocking buffer: 3% nonfat dry milk in TBST.
 Detection: ECL Basic Kit (RM00020).
 Exposure time: 1s.



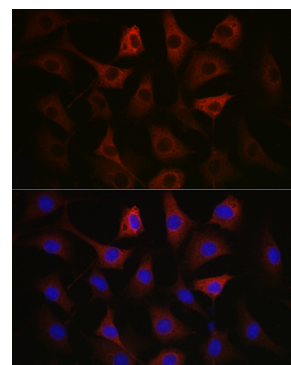
Western blot analysis of lysates from HeLa cells using GAPDH Mouse mAb (AC002) at 1:5000-1:1280000 dilution incubated overnight at 4°C.
 Secondary antibody: HRP conjugated Goat anti-Mouse IgG (H+L) (AS003) at 1:10000 dilution.
 Lysates/proteins: 25 µg per lane.
 Blocking buffer: 3% nonfat dry milk in TBST.
 Detection: ECL Basic Kit (RM00020).
 Exposure time: 20 s.



Immunohistochemistry analysis of GAPDH in paraffin-embedded human kidney using GAPDH Mouse mAb (AC002) at dilution of 1:100 (40x lens). Perform high pressure antigen retrieval with 10 mM citrate buffer pH 6.0 before commencing with IHC staining protocol.



Immunohistochemistry analysis of GAPDH in paraffin-embedded mouse kidney using GAPDH Mouse mAb (AC002) at dilution of 1:100 (40x lens). Perform high pressure antigen retrieval with 10 mM citrate buffer pH 6.0 before commencing with IHC staining protocol.



Immunofluorescence analysis of NIH/3T3 cells using GAPDH Mouse mAb (AC002) at dilution of 1:100 (40x lens). Blue: DAPI for nuclear staining.